

## RESEARCH ARTICLE

# The autistic brain can process local but not global emotion regularities in facial and musical sequences

Jie Xu<sup>1</sup> | Linshu Zhou<sup>2</sup>  | Fang Liu<sup>3</sup>  | Chao Xue<sup>1</sup> | Jun Jiang<sup>2</sup>  | Cunmei Jiang<sup>2</sup> 

<sup>1</sup>Department of Psychology, Shanghai Normal University, Shanghai, China

<sup>2</sup>Music College, Shanghai Normal University, Shanghai, China

<sup>3</sup>School of Psychology and Clinical Language Sciences, University of Reading, Reading, UK

## Correspondence

Cunmei Jiang, Music College, Shanghai Normal University, 100 Guilin Road, Xuhui District, Shanghai 200234, China.  
Email: cunmeijiang@126.com

## Funding information

Philosophy and Social Science Projects of Shanghai, Grant/Award Number: 2021BWY004; European Research Council Starting Grant, Grant/Award Number: 678733; National Natural Science Foundation of China, Grant/Award Numbers: 31470972, 31500876

## Abstract

Whether autism spectrum disorder (ASD) is associated with a global processing deficit remains controversial. Global integration requires extraction of regularity across various timescales, yet little is known about how individuals with ASD process regularity at local (short timescale) versus global (long timescale) levels. To this end, we used event-related potentials to investigate whether individuals with ASD would show different neural responses to local (within trial) versus global (across trials) emotion regularities extracted from sequential facial expressions; and if so, whether this visual abnormality would generalize to the music (auditory) domain. Twenty individuals with ASD and 21 age- and IQ-matched individuals with typical development participated in this study. At an early processing stage, ASD participants exhibited preserved neural responses to violations of local emotion regularity for both faces and music. At a later stage, however, there was an absence of neural responses in ASD to violations of global emotion regularity for both faces and music. These findings suggest that the autistic brain responses to emotion regularity are modulated by the timescale of sequential stimuli, and provide insight into the neural mechanisms underlying emotional processing in ASD.

## KEYWORDS

autism spectrum disorder, facial emotion, global deficit, musical emotion, regularity

## INTRODUCTION

Local and global processing are two styles in which humans process information: While local processing focuses on the specific details of a stimulus, global processing integrates details into a coherent whole (Happé & Frith, 2006). Whereas typically developing (TD) individuals demonstrate a global processing bias (e.g., Krakowski et al., 2016; Rezvani et al., 2020), an atypical local bias and a global processing deficit have been proposed for individuals with autism spectrum disorder (ASD). ASD is a neurodevelopmental disorder characterized by difficulties with social communication and social interaction, as well as restricted and repetitive behaviors and interests (APA, 2013). Two cognitive theories have tried to account for the relationship between local and global processing in ASD. Weak Central Coherence (WCC) theory proposes that the local bias

results from ASD individuals' deficit in processing global information (Frith, 1989; Frith & Happé, 1994; Happé & Booth, 2008; Happé & Frith, 2006), whereas Enhanced Perceptual Functioning (EPF) theory posits that enhanced local processing can occur without a global processing deficit in ASD (Motttron et al., 2006; Motttron & Burack, 2001). Thus, the main difference between EPF and WCC theories is whether ASD individuals have deficits in processing global information.

Global processing involves two complementary processes—regularity extraction and integration (Erickson & Thiessen, 2015). Specifically, integration of local parts/details into a whole is based upon regularity extraction, a process that analyzes and derives the relations (similarities) among the parts of a stimulus. With regularity, people can anticipate upcoming events, detect those in violation of the regularity, and integrate the

events into the context. Previous studies on global processing in ASD mainly focus on integrative processing, and the results have been controversial. While some studies show reduced/impaired ability for individuals with ASD to integrate information in composite faces (Gauthier et al., 2009; Teunisse & de Gelder, 2003), large letters (D'Souza et al., 2016; Guy et al., 2019), fragmented pictures (Booth & Happé, 2018; Neufeld et al., 2020), and coherent and biological motions (Brieber et al., 2010; Koldewyn et al., 2010; Martínez et al., 2019), other studies demonstrate intact integration in ASD across these conditions: composite faces (Brewer et al., 2019; Stevenson et al., 2018; Ventura et al., 2018), large letters (Baisa et al., 2021; Soriano et al., 2018; Van der Hallen et al., 2017), fragmented pictures (D'Souza et al., 2016; Jobs et al., 2018), and coherent and biological motions (Cusack et al., 2015; Manning et al., 2015; van Boxtel et al., 2016). In summary, mixed results have been reported in studies of integrative processing based on the regularities of stimulus structures, while no studies have directly examined regularity processing in ASD.

Nevertheless, a few studies report that individuals with ASD are able to learn statistical relations in long sequences (at least with a duration of 108 s) (Haebig et al., 2017; Mayo & Eigsti, 2012; Roser et al., 2015), despite showing atypical neural responses to these relations (Jeste et al., 2015; Marin et al., 2020; Scott-Van Zeeland et al., 2010). In fact, regularities can occur on different timescales, short (local) or long (global), constituting a local versus global distinction (Sanders & Poeppel, 2007). Thus, relative to static stimuli, dynamic stimuli or sequences may be better able to disentangle local from global regularities. In sequences, for example, local regularity may exist within a trial; global regularity may exist across trials. When presented with four identical tones followed by a deviant pitch, individuals with ASD show reduced mismatch negativity (MMN) amplitudes to violations of local regularity in deviant trials, despite exhibiting preserved P3b responses to violations of global regularity (across trials), suggesting impaired early sensory prediction processing but intact conscious expectation processing in ASD (Goris et al., 2018). Given that the local deviant detection in Goris et al. (2018) cannot rule out the effect of memory trace for physical characteristics of repeated sounds, it would be worth investigating the processing of more abstract regularity at both local and global levels in ASD. Through the lens of emotion processing, the present study examines regularity processing on different timescales across auditory and visual domains in ASD.

Understanding emotions in self and others creates a basis for social communication (Shariff & Tracy, 2011). Poor ability to understand emotions, which not only influences our own reaction to others but also impacts how others react to us, may be one of the main causes of social-communication difficulties in ASD (Philip et al., 2010; Uljarevic & Hamilton, 2013). The human

face is a crucial transmitter of social information (Jack & Schyns, 2015), and impaired facial expression recognition has been proposed as a candidate marker for ASD (Loth et al., 2018). Therefore, examining facial emotion regularity processing at the local and global levels would not only contribute to a better understanding of autistic social-communication difficulties, but also provide evidence for the debate over the global processing deficit in ASD.

Behavioral studies have demonstrated impaired emotional recognition from whole faces in ASD (e.g., Davidson et al., 2019; Evers et al., 2015; Griffiths et al., 2019; Harms et al., 2010; Lozier et al., 2014; Sucksmith et al., 2013; Yeung et al., 2014). Results from fMRI (functional magnetic resonance imaging) studies show that altered facial emotional processing is correlated with abnormal activation of fusiform gyrus (Critchley et al., 2000; Deeley et al., 2007; Greimel et al., 2010; Pierce et al., 2001) and amygdala (Hadjikhani et al., 2007; Klapwijk et al., 2016; Pierce et al., 2001). Unlike fMRI, ERPs (event-related potentials) can reveal the time course of facial emotional processing, separating early pre-attentive detection from late conscious processing. Focusing on early-stage facial expressive perception, some ERP studies revealed reduced amplitudes (Akechi et al., 2010; Apicella et al., 2013; Batty et al., 2011; de Jong et al., 2008; Faja et al., 2016) and delayed peak latencies (Apicella et al., 2013; Batty et al., 2011) of N170 in ASD, suggesting neural abnormalities in encoding facial expressions. However, studies focusing on emotion processing at a later stage yielded mixed results. Dawson et al. (2004) found that individuals with ASD exhibited comparable amplitudes of N300 and late negativity to fearful versus neutral faces, suggesting that fearful faces did not affect attentional processing in ASD. However, Tye et al. (2014) reported an N400 effect to fearful versus neutral faces in ASD, reflecting increased attention allocation to negative emotional stimuli in ASD. This discrepancy may be because the tasks required different processing strategies involving local versus global processing: while watching a circle appear around the center of a facial image may require attending to the specific details in the study by Tye et al. (2014), passively viewing a facial image may not impose focus on any specific information of the image (Dawson et al., 2004).

Only two studies, however, focused on local versus global processing of facial expressions in ASD. Deruelle et al. (2008) examined local-global processing using high- (i.e., local facial features) and low-spatial frequency information (i.e., global configuration of facial expression) as stimuli. The results suggest that children with ASD showed enhanced behavioral performance on local versus global facial expressions. Similarly, an ERP study showed that, in children with ASD, fearful faces elicited higher P1 amplitudes than neutral faces only in the local processing condition, suggesting fast extraction of facial

expressions driven by local information in ASD (Vlamings et al., 2010). In summary, although previous studies have investigated the neural activities associated with facial emotional processing in ASD, none have focused on the neural responses to emotion regularity among facial expressions. This may be due to the fact that only single, or individually presented, facial expressions were used in previous studies. In contrast to single facial expressions, sequential facial expressions can incorporate both local and global emotion regularities, making it possible to investigate brain responses to emotion regularities at both local and global levels. Since the different timescales resemble real-life experiences, examining regularity processing in facial emotions at both local and global levels would contribute to a better understanding of social-communication difficulties in ASD.

Besides facial emotional processing, auditory emotional processing also constitutes an important part of social communication in everyday life. As sequentially presented auditory stimuli, music has been regarded as having the potential to ameliorate facial emotional processing impairments in ASD (Brown, 2017; Katagiri, 2009; Wagener et al., 2021). However, previous studies on the processing of music emotions in ASD have yielded mixed results. While one fMRI study showed preserved neural activity during the processing of musical emotions in ASD (Gebauer et al., 2014), another study reported altered brain activities in the premotor area and the left anterior insula, particularly in response to happy music (Caria et al., 2011). Similarly, in behavioral studies, while showing preserved identification of discrete musical emotions expressed by psychoacoustic cues such as tempo and intensity (Järvinen et al., 2016; Quintin et al., 2011), individuals with ASD demonstrate impairments in rating emotions conveyed by tonality and temporal variation (Bhatara et al., 2010) and in rating emotional valence in music (Kopec et al., 2014). The discrepancy among these results may be because individuals with ASD have differential performance on the processing of local psychoacoustic cues versus the global context of tonality. However, this hypothesis needs to be tested by simultaneously manipulating local and global musical emotional information, which has not been done in previous behavioral or neural studies.

In the present investigation, we used ERPs to explore whether individuals with ASD would show abnormal neural responses to local (within trial) and global (across trials) emotion regularities in sequential facial expressions (Experiment 1); and if so, whether this abnormality would generalize to the music domain (Experiment 2). An emotional oddball paradigm was used in both experiments, where each standard or deviant stimulus comprised five facial-images/chords constructed based on an abstract regularity of emotional type (i.e., belonging to the same type of emotion or not), rather than using physically identical repetitions. Within a sequence, local regularity was defined by the five facial images/chords

expressing the same type of emotion (pleasant or unpleasant). Across sequences, global regularity was defined by the fifth facial-images/chords expressing a different emotion from that of the first four facial-images/chords. To dissociate local from global processing of emotion regularity, we manipulated the frequency of deviant sequences. Specifically, for the blocks with local deviations, the standard sequences (with a frequency of 84%) had five different images/chords expressing the same emotion, while the deviant sequences (with a frequency of 16%) had four different images/chords expressing the same emotion followed by an image/chord associated with a different emotion. In this case, the fifth images/chords violated the local emotion regularity of the deviant sequences (within trial). Such a violation of the local regularity is at the individual sequence level. For the blocks with global deviations, however, the standard sequences (with a frequency of 84%) were those in which the fifth image/chord expressed a different emotion than the first four, while the deviant sequences (with a frequency of 16%) were those in which all five different images/chords expressed the same type of emotion. As such, the fifth images/chords in the deviant sequences violated the global emotion regularity of the standard sequences (across trials). Such a violation of the global regularity is at the whole block level.

We mainly focused on three ERP components that are related to the processing of deviants: the mismatch negativity (MMN), P3b, and the late negativity. The MMN is an early ERP component which reflects a preattentive, automatic response (Näätänen et al., 2001). Following the MMN, the P3b is a later component associated with conscious access (Sergent et al., 2005). It has been suggested that the MMN is observed in response to violations of local regularity at a preattentive level, whereas the P3b is shown to respond to violations of global regularity at a conscious level (Bekinschtein et al., 2009; Goris et al., 2018). Different from the MMN and P3b, the late negativity reflects the top-down allocation of attention for the inspection of memory traces (Mecklinger et al., 2016). If ASD were associated with a local processing bias that may not result in a global processing deficit as posited by EPF theory (Mottron et al., 2006; Mottron & Burack, 2001), then violations of local facial and musical emotion regularities would elicit an MMN in both the ASD and TD groups. In contrast, if individuals with ASD had a global processing deficit as proposed by WCC theory (Frith, 1989; Frith & Happé, 1994; Happé & Booth, 2008; Happé & Frith, 2006), then we would expect that violations of global facial and musical emotion regularities might elicit a P3b or a late negativity in TD only, but not in ASD (e.g., Pijnacker et al., 2010). In addition, given that ASD is thought to be associated with a global processing deficit across modalities (Foster et al., 2016; Foxton et al., 2003; Happé & Frith, 2006), we expected to

observe similar patterns of ERP results across visual and auditory domains in ASD.

## EXPERIMENT 1: NEURAL RESPONSES TO LOCAL AND GLOBAL EMOTION REGULARITIES IN SEQUENTIAL FACIAL EXPRESSIONS

Understanding facial expressions is an important component of social communication (Jack & Schyns, 2015). Although making emotional inferences from facial expressions is a fast and easy process for most people (Jack & Schyns, 2015), it has been suggested that lack of understanding of facial expressions can serve as a candidate diagnostic marker for ASD (Loth et al., 2018). Thus, in Experiment 1, we used images of facial expressions to investigate the neural responses to local and global facial emotion regularities in individuals with ASD. We predicted that ASD participants would exhibit an MMN (an early ERP component) in response to violations of local facial emotion regularity, but not any later components (the P3b or the late negativity) for violations of global facial emotion regularity, given the atypical local bias (e.g., Motttron et al., 2006; Motttron & Burack, 2001) and the global deficit hypotheses (e.g., Frith & Happé, 1994; Happé & Frith, 2006) in ASD.

## Method

### Participants

A priori power analysis was conducted to calculate the minimum sample size using G\*Power 3.1.9.7 (Faul et al., 2007). Power calculations indicated that 34 participants across groups would provide 80% power to detect a moderate ( $f = 0.25$ ) interaction between group (ASD vs. TD) and stimulus type (standard vs. deviant) at a

significance level of 5%. Therefore, 21 ASD participants aged 8–20 and 21 TD participants aged 9–25 were recruited for this study. Data from one ASD participant were discarded because of excessive drift artifacts. The final set of participants thus consisted of 20 ASD and 21 TD participants.

ASD participants were recruited from a rehabilitation center for individuals with ASD in China. All the individuals with ASD had a clinical diagnosis of ASD, which was further confirmed using the Autism Diagnostic Observation Schedule—Second Edition (ADOS-2; Lord et al., 2012) by a psychologist, who had received formal training and achieved clinical and research reliability for administration of this semi-structured interview. The ADOS-2 Module 3 was used for participants <18 years, and Module 4 for participants ≥18 years. TD participants were recruited from mainstream schools for students with no disabilities or neurological/psychiatric disorders in China. Raven's Standard Progressive Matrices (RPM; Raven, 2000) was used to measure non-verbal IQ in all participants.

Table 1 displays participants' demographic characteristics. The two groups were matched on age, years of education, years of musical training, and IQ. All participants were right-handed, with normal hearing, normal or corrected-to-normal vision. All research procedures were approved by the ethics committee of Shanghai Normal University, and performed in accordance with the ethical standards of the Declaration of Helsinki. Each participant and—for participants below the age of 18—a parent signed a written consent form prior to the experiments and were paid for their participation.

### Stimuli and procedure

Forty-eight facial expression images were selected from the Chinese Facial Affective Picture System (CFAPS; Gong et al., 2011). Among these images, 24 happy

**TABLE 1** Demographic characteristics of participants in ASD and TD groups

	ASD group ( $n = 20$ )	TD group ( $n = 21$ )	$t$	$p$
Sex	3 F, 17 M	3 F, 18 M		
Age in years	13.50 (3.76)	13.19 (4.12)	0.25	0.803
Education in years	6.60 (2.50)	7.91 (3.63)	1.33	0.190
Musical training in years	1.90 (2.45)	1.57 (2.31)	0.44	0.661
ADOS-2 Module 3 ( $n = 16$ )	14.94 (6.52)	-		
ADOS-2 Module 4 ( $n = 4$ )	17.25 (0.96)	-		
IQ (RPM)	96.81 (18.45)	105.37 (15.53) <sup>a</sup>	1.56	0.127

*Note:* Sixteen participants (nine ASD and seven TD participants) have received music training. Of these, nine of the participants (five ASD and four TD participants) took piano lessons, five (two ASD and three TD participants) studied wind music, such as the saxophone and the Sheng, a traditional Chinese instrument, one ASD participant learned the drum set, and one ASD participant learned vocal music. The education received by the two groups was homogeneous. All of them had received education under China's nine-year compulsory education system in ordinary primary and secondary schools. F = female; M = male. The numbers in parentheses are standard deviations (SD).

<sup>a</sup>Data are missing from two participants.



smiling facial images represented pleasant expression, and 24 angry facial images represented unpleasant expression (see Supporting information for details).

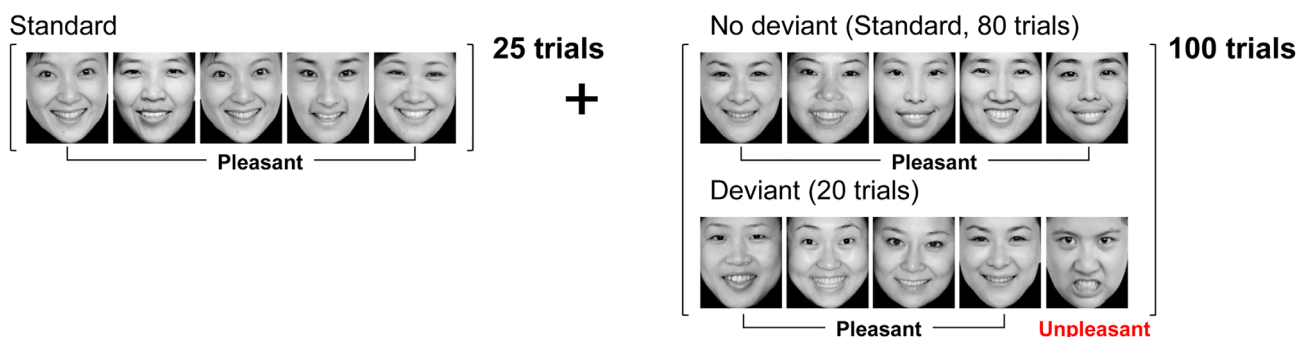
Consistent with the oddball paradigm employed by previous studies (Bekinschtein et al., 2009; Wacongne et al., 2011), five-image sequences were presented in two types of blocks: four blocks with local deviations and the other four with global deviations (see Figure 1 for examples). In the blocks with local deviations, local standards (five different facial images with the same emotion) with a high frequency (84%) were infrequently (16%) interrupted by local deviants (four different facial images with the same emotion followed by a facial image with a different type of emotion). In the blocks with global deviations, global standards (four different facial images with the same emotion followed by a facial image with a different type of emotion) with a high frequency (84%) were infrequently (16%) interrupted by global deviants (five different facial images with the same emotion). In each sequence, the five faces that appeared consecutively were physically different.

All stimuli were presented using Eprime (Version 2.0). Within the sequences, each image was presented at the center of a computer screen for 250 ms with a

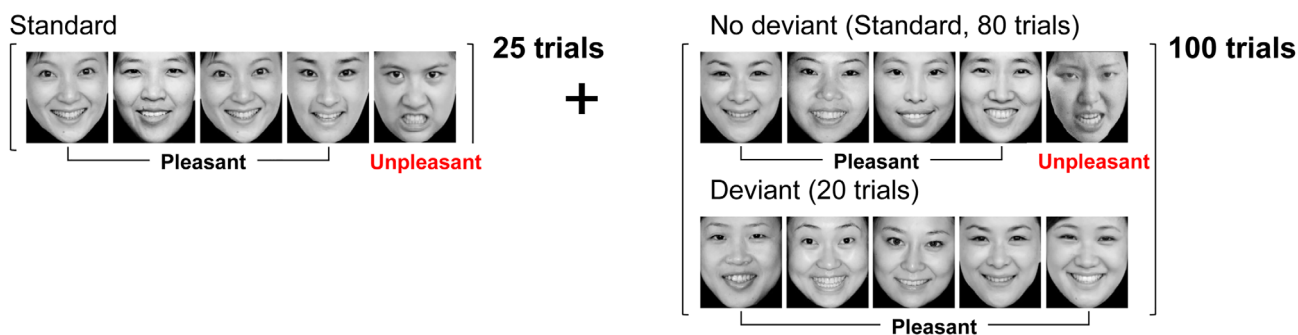
stimulus onset asynchrony of 500 ms, resulting in sequences of 2250 ms. Intertrial intervals were jittered between 700 and 1000 ms, during which a fixation point was presented at the center of the screen. In order to avoid selective attention on the local sequences (Plaisted et al., 1999), participants were informed that each sequence consisted of five images and that a few of the sequences might be different from the majority of these sequences. Their task was to count the number of those deviant sequences, and report the number after each block.

Each block consisted of 125 trials, the first 25 of which were frequent sequences that helped establish the rule at the beginning. The following 100 trials consisted of 80 frequent sequences and 20 rare sequences in random order. Each participant received four replications of each block type (block with local or global deviations), resulting in a total of eight blocks (each with an approximate duration of 7 min). The gender (male and female) and the valence (pleasant and unpleasant) of emotional faces were balanced across the blocks. Block order was completely randomized. Between blocks, there were self-paced breaks, resulting in a total duration of approximately 1 h.

### Blocks with local deviations in emotional regularity



### Blocks with global deviations in emotional regularity



**FIGURE 1** Emotional oddball paradigm of facial images in Experiment 1. Five-image sequences were presented in blocks with local or global deviations. Each block consisted of 125 trials, where the first 25 trials consisted of the frequent sequences in order to establish the regularity. The following 100 trials consisted of 80 frequent sequences and 20 rare sequences in random order. By doing so, a facial image with a different emotional type following the first four images with the same type of emotion represents a local deviant in the blocks with local deviations (within trial), while the five-image sequences with the same emotional type represents global deviants in the blocks with global deviations (across trials). Source: Photos reproduced with permission from Yuejia Luo

## Electroencephalography (EEG) recording and analysis

EEG data were recorded from 64 standard scalp locations (International 10–20 system) by Eego system (ANT Neuro, the Netherlands), digitized at a rate of 1024 Hz, with a 0.05 Hz low cutoff filter and a 100 Hz high cutoff filter. The electrode of CPz served as the online reference, and an electrode placed between Fz and Fpz served as the ground. Horizontal EOG was recorded with an electrode placed 1 cm from the left canthi. All electrode impedances were kept below 20 K $\Omega$  during the experiment. ERP waveforms were time-locked to the onset of the fifth facial image in each sequence.

The data were referenced off-line to the algebraical mean of left and right mastoid electrodes. By using the Basic FIR filter in EEGLAB (Version 2019.1), high-pass filtering the data at 0.1 Hz was applied to remove the linear trends and then, the low-pass filter at 30 Hz. An independent component analysis was carried out to remove blink artifacts, without using any automatic artifact rejection sequence. Trials were averaged offline with an epoch length of 1200 ms, including a baseline from 200 to 0 ms before the stimulus onset. After the time window was selected, the amplitudes were averaged under each condition for each participant.

Given the emotional oddball paradigm, several classic oddball-evoked ERP components were expected, such as the MMN, N2, and P3b (Campanella et al., 2002, 2012; Everaert et al., 2014; Folstein & Van Petten, 2008; Putkinen et al., 2014; Sanger et al., 2018; Schirmer & Escoffier, 2010; Virtala et al., 2012). Moreover, since a similar display of emotional sequences has been shown to evoke the late negativity (Bublitzky et al., 2010; Erhan et al., 1998; Sanger et al., 2018) and the late positive component (LPC; Liu et al., 2012; Moore et al., 2019; Schupp et al., 2000), these later components were also expected in the present experiment. Latencies, scalp distribution, and amplitudes of these ERP components were expected to occur equivalently in response to auditory and visual stimuli, except that the N2 may be more easily evoked by the auditory than the visual modality (Halgren et al., 1998). Prior investigations have shown that the MMN is a difference wave obtained by subtracting the ERPs elicited by the standard from those elicited by the deviant, and it is typically prominent from about 100 to 200 ms after stimulus onset with a frontocentral distribution (Garrido et al., 2009). The N2 is typically measured around the peaks between 180 and 300 ms over frontocentral channels (Folstein & Van Petten, 2008; Holroyd, 2004). The present study thus quantified the MMN and N2 components by comparing the mean amplitudes elicited by standard with deviant stimuli during the time windows of 130–180 ms and 180–250 ms, respectively, after the onset of the fifth image over frontocentral electrodes. Furthermore, the P3b is known to be maximal from approximately 250 to 550 ms after

stimulus onset over centroparietal electrodes (Luck & Hillyard, 1994; Polich, 2007; Sanger et al., 2018; van Dinteren et al., 2014), and the late negativity and LPC are known to be maximal from approximately 600 to 1000 ms after stimulus onset over centroparietal electrodes (Liu et al., 2012; Moore et al., 2019; Sanger et al., 2018; Schupp et al., 2000). Therefore, we measured the P3b and LPC/late negativity by comparing the mean amplitudes elicited by standard with deviant stimuli during the time windows of 250–550 ms and 600–1000 ms, respectively, after the fifth image onset over centroparietal electrodes. These parameters fitted well with the actual timings and scalp distributions of the MMN, N2, P3b, and LPC/late negativity (see Figure 2).

For statistical analysis, the MMN and N2 amplitudes over a cluster of nine frontocentral electrode sites (Fz, F1, F2, F3, F4, FC1, FC2, FC3, FC4) were subjected to a two-way repeated-measure analysis of variance (ANOVA) with group (ASD, TD) as a between-subjects factor and stimulus type (standard, deviant) as a within-subjects factor. The amplitudes of P3b and LPC/late negativity over a cluster of nine centroparietal electrode sites (Pz, P1, P2, P3, P4, CP1, CP2, CP3, CP4) were subjected to a similar two-way repeated-measure ANOVA. To examine local versus global processing of facial emotions, repeated-measure ANOVAs were conducted for blocks with local and global deviations, respectively.

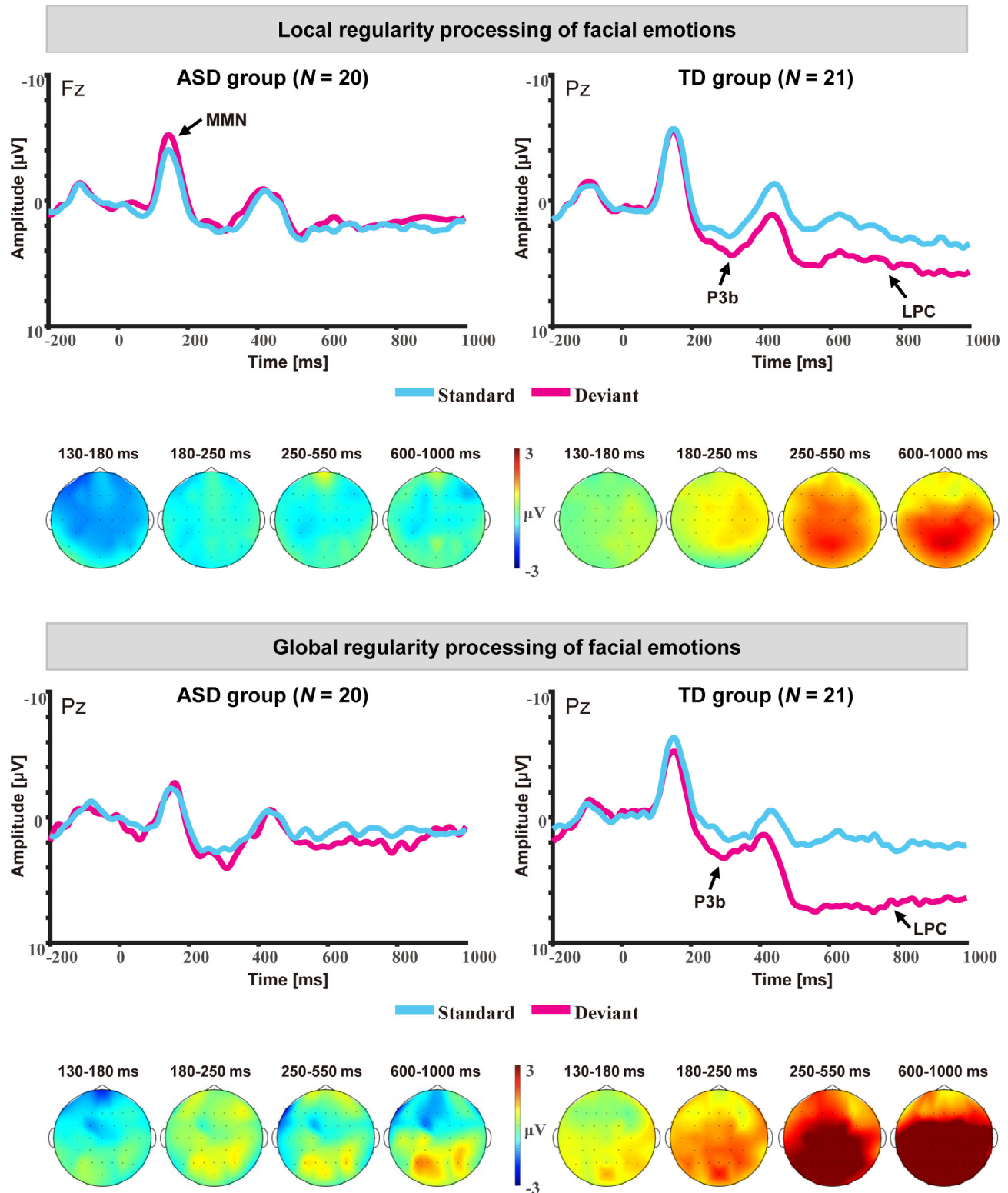
## Bayesian analyses

To get more conservative results and assess the strength of evidence, we ran Bayesian hypothesis testing and calculated Bayes factors (*BFs*) by using JASP (Version 0.14), with the default priors (van Doorn et al., 2021). The *BF* is the ratio of the probability of one hypothesis over another and can quantify the relative strength of evidence for the alternative ( $H_1$ ) and null ( $H_0$ ) hypotheses (Brydges & Bielak, 2020; Love et al., 2019; Wagenmakers et al., 2018). Typically,  $1 < BF < 3$  is considered *weak* evidence for  $H_1$ ,  $3 < BF < 10$  moderate, and  $BF > 10$  strong, whereas  $0.33 < BF < 1$  indicates *weak* evidence for  $H_0$ ,  $0.10 < BF < 0.33$  moderate, and  $BF < 0.10$  strong (Jeffreys, 1961; Lee & Wagenmakers, 2014). For example, a *BF* of 12 means that the data are 12 times more likely under  $H_1$  than under  $H_0$ , providing strong evidence in support of the presence of an effect.

## Results

### Local regularity processing of facial emotions

As shown in Table 2, there was moderate evidence for the interaction between group and stimulus type for the MMN amplitudes (130–180 ms time window,  $BF = 6.46$ ), as deviant images elicited an MMN in ASD



**FIGURE 2** Grand mean waveforms elicited by local and global facial emotional regularities at representative electrode sites for ASD and TD participants. Bottom: Scalp distribution of the deviant-minus-standard difference waves in four-time windows for ASD and TD participants

participants, but not in TD participants (see Figure 2). Although the ANOVA on the N2 amplitudes (180–250 ms time window) showed weak evidence for the interaction between group and stimulus type ( $BF = 1.49$ ), simple-effects tests did not show significant differences

between deviant and standard images for either group. However, there was strong and moderate evidence for the group by stimulus type interaction for the P3b (250–550 ms time window,  $BF = 13.57$ ) and LPC/late negativity (600–1000 ms time window,  $BF = 3.24$ ) amplitudes,

**TABLE 2** ERP results of the local regularity processing of facial emotions in Experiment 1

Variables	<i>F</i> (1, 39)	<i>p</i>	$\eta_p^2$	<i>BF</i>
MMN				
Group	6.50	0.015	0.14	3.23
Stimulus type	3.92	0.055	0.09	0.85
Group $\times$ stimulus type	<b>5.38</b>	<b>0.026</b>	<b>0.12</b>	<b>6.46</b>
ASD: Dev < Std	9.02	0.005	0.19	
TD: Dev = Std	0.06	0.810	0.002	
N2				
Group	0.08	0.785	0.002	0.54
Stimulus type	0.07	0.799	0.002	0.24
Group $\times$ stimulus type	4.09	0.050	0.10	1.49
ASD: Dev = Std	1.52	0.225	0.04	
TD: Dev = Std	2.66	0.111	0.06	
P3b				
Group	0.12	0.732	0.003	0.36
Stimulus type	2.83	0.101	0.07	0.66
Group $\times$ stimulus type	<b>10.05</b>	<b>0.003</b>	<b>0.21</b>	<b>13.57</b>
ASD: Dev = Std	1.08	0.304	0.03	
TD: Dev > Std	12.06	0.001	0.24	
LPC/late negativity				
Group	5.08	0.030	0.12	2.25
Stimulus type	2.81	0.102	0.07	0.67
Group $\times$ stimulus type	<b>6.09</b>	<b>0.018</b>	<b>0.14</b>	<b>3.24</b>
ASD: Dev = Std	0.31	0.583	0.01	
TD: Dev > Std	8.80	0.005	0.18	

Note: Significant interactions between group and stimulus type ( $p < 0.05$ ) are marked in bold. Dev = Deviant; Std = Standard.

respectively, as only TD participants responded to the standard and deviant images differently by showing a P3b and an LPC (see Figure 2).

## Global regularity processing of facial emotions

As presented in Table 3, there was moderate evidence for the group by stimulus type interaction for the P3b amplitudes ( $BF = 3.09$ ), as a P3b was present in TD participants, but not in ASD participants. Strong evidence for the group by stimulus type interaction was also observed for the LPC/late negativity amplitudes ( $BF = 61.56$ ), reflecting that TD participants, but not ASD participants showed different neural responses to deviant and standard images through an LPC (see Figure 2).

## Discussion

The findings indicate that local facial emotion regularity elicited an MMN in ASD but not in TD participants. Unlike ASD participants, TD participants exhibited a

**TABLE 3** ERP results of the global regularity processing of facial emotions in Experiment 1

Variables	<i>F</i> (1, 39)	<i>p</i>	$\eta_p^2$	<i>BF</i>
MMN				
Group	12.41	0.001	0.24	28.74
Stimulus type	0.21	0.648	0.01	0.29
Group $\times$ stimulus type	0.50	0.482	0.01	0.32
N2				
Group	0.52	0.475	0.01	0.41
Stimulus type	0.17	0.679	0.004	0.26
Group $\times$ stimulus type	1.03	0.316	0.03	0.41
P3b				
Group	6.14	0.018	0.14	3.19
Stimulus type	4.87	0.033	0.11	1.61
Group $\times$ stimulus type	<b>5.60</b>	<b>0.023</b>	<b>0.13</b>	<b>3.09</b>
ASD: Dev = Std	0.01	0.913	< 0.001	
TD: Dev > Std	10.72	0.002	0.22	
LPC/late negativity				
Group	20.06	< 0.001	0.34	333.13
Stimulus type	14.02	0.001	0.26	17.92
Group $\times$ stimulus type	<b>15.12</b>	<b>&lt; 0.001</b>	<b>0.28</b>	<b>61.56</b>
ASD: Dev = Std	0.01	0.920	< 0.001	
TD: Dev > Std	29.85	< 0.001	0.43	

Note: Significant interactions between group and stimulus type ( $p < 0.05$ ) are marked in bold. Dev = Deviant; Std = Standard.

P3b and an LPC in response to local facial emotion regularity. Reflecting preattentive detection of deviants (Bekinschtein et al., 2009; Wacongne et al., 2011), the presence of the MMN indicates that the autistic brain is able to detect violations of local emotion regularity embedded in sequential facial expressions at an automatic level. On the other hand, considering the ERP morphology and topographic distribution, the LPC observed in TD participants might be the continuation of the P3b component. The violations of facial emotional regularities may increase the investment of attentional resources during the task, as revealed by the P3b effect. This might have downstream consequences for the adjustment of attentional resources and thus leads to greater difficulty in conscious processing, which is reflected by the LPC effect (Chen et al., 2007; Folstein & Van Petten, 2011; Teixeira-Santos et al., 2020). Given that the P3b and its late component are associated with attentional control/conscious access (Moore et al., 2019; Sergent et al., 2005), the absence of the P3b and LPC in ASD participants indicated that they were unable to redirect the attention to violations of local emotion regularity at a conscious level. Together, our findings indicate that although both ASD and TD participants can show neural responses to violations of local facial emotion regularity, their response patterns differ from each other in the manner of processing (conscious vs. nonconscious).



Regarding global processing, our findings indicate that global facial emotion regularity elicited a P3b, followed by an LPC in TD participants, but not in ASD participants. In line with previous findings (Bekinschtein et al., 2009; Wacongne et al., 2011), the P3b and LPC observed in TD participants suggest that global processing is highly dependent on attention and conscious awareness of the stimulus. In this scenario, the absence of the P3b and LPC in ASD participants suggests that the autistic brain cannot detect violations of global facial emotion regularity in a conscious manner.

## EXPERIMENT 2: NEURAL RESPONSES TO LOCAL AND GLOBAL EMOTION REGULARITIES IN SEQUENTIAL CHORDS

Since auditory emotional processing is also an important component of social communication, we examined neural responses to local versus global emotion regularities extracted from sequential chords in Experiment 2. Although individuals with ASD are reported to have enhanced or intact musical abilities, such as the ability to perceive pitch changes (Bonnell et al., 2003; Bonnell et al., 2010; Heaton et al., 1998; Heaton et al., 1999; Stanutz et al., 2014) and melodic contour (Bouvet et al., 2014; Chowdhury et al., 2017; Foster et al., 2016; Germain

et al., 2019; Jiang et al., 2015), whether they are spared in processing local and global musical emotion regularities remains uncertain. To this aim, we replaced the facial images in Experiment 1 with affective chords for Experiment 2, where chord sequences were presented in blocks with local and global deviations to elicit local- and global-level novelty responses, respectively. If individuals with ASD could process local information (e.g., Mottron et al., 2006; Mottron & Burack, 2001) but not global information (e.g., Frith & Happé, 1994; Happé & Frith, 2006), then we would expect to observe early ERP components such as the MMN to local musical emotion regularity, but not later ERP components to global musical emotion regularity in ASD.

## Method

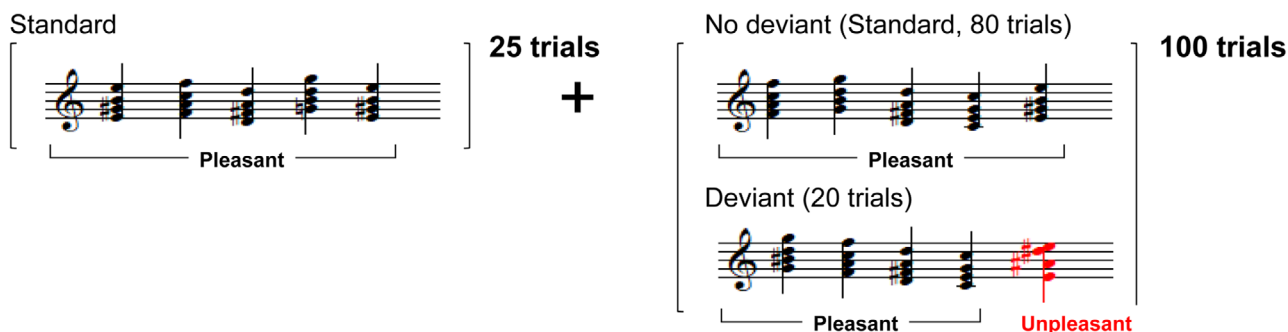
### Participants

The participants were identical to those in Experiment 1.

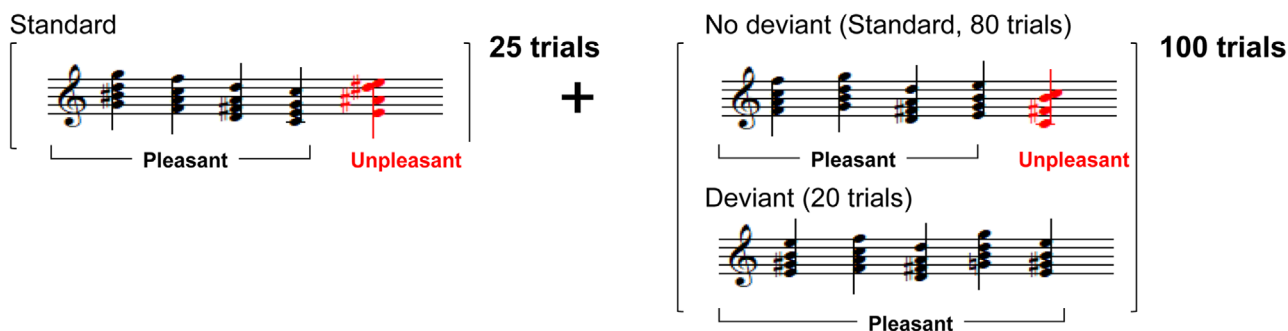
### Stimuli and procedure

The experimental paradigm was the same as in Experiment 1, except that emotional facial images were replaced by affective chords (e.g., see Figure 3). The sequences

### Blocks with local deviations in emotional regularity



### Blocks with global deviations in emotional regularity



**FIGURE 3** Emotional oddball paradigm of chords in Experiment 2. Five-chord sequences were presented in blocks with local or global deviations. Each block consisted of 125 trials, where the first 25 trials consisted of the frequent sequences in order to establish the regularity. The following 100 trials consisted of 80 frequent sequences and 20 rare sequences in random order

were composed using consonant (pleasant sounding) and dissonant (unpleasant sounding) chords (see Supporting information for details). Following previous studies (Steinbeis & Koelsch, 2011; Zhou et al., 2019), the consonant chords in the present experiment were major chords in the root position (e.g., C-E-G-C). Dissonant stimuli were non-triads (e.g., C-F sharp-B-C). The root notes ranged from G3 to F#4, resulting in 12 chords in each affective category.

The experimental procedure and task were identical to those of Experiment 1. Chords were presented binaurally through loudspeakers (Logitech Z120) in a sound-proof room. The order of Experiments 1 and 2 was counterbalanced across participants.

## EEG recording and analysis

The EEG recording, preprocessing, and data analyses were identical to those in Experiment 1.

## Results

### Local regularity processing of musical emotions

As illustrated in Table 4, although there was moderate or weak evidence against the interaction between group and stimulus type for all components, there was strong evidence for the main effect of stimulus type for the MMN ( $BF = 15.27$ ) and N2 ( $BF = 14.35$ ) amplitudes. Specifically, for both groups, local

musical emotional information elicited an MMN, followed by an N2 (see Figure 4).

### Global regularity processing of musical emotions

As shown in Table 5 and Figure 4, there was strong evidence for the stimulus type by group interaction for the LPC/late negativity amplitudes ( $BF = 29.19$ ), reflecting that only TD participants responded to the standard and deviant chords differently by showing a late negativity.

## Discussion

The MMN observed in the blocks with local deviants in musical emotions is consistent with previous ERP studies on musical emotions (e.g., Virtala et al., 2012), indicating that both groups showed comparable neural responses to violations of local musical emotion regularity automatically. Since the N2 is considered a mismatch-related subcomponent and is associated with attentive control (Folstein & Van Petten, 2008), it is possible that the N2 reflected attention-related mismatch detection of local emotional deviants in the two groups.

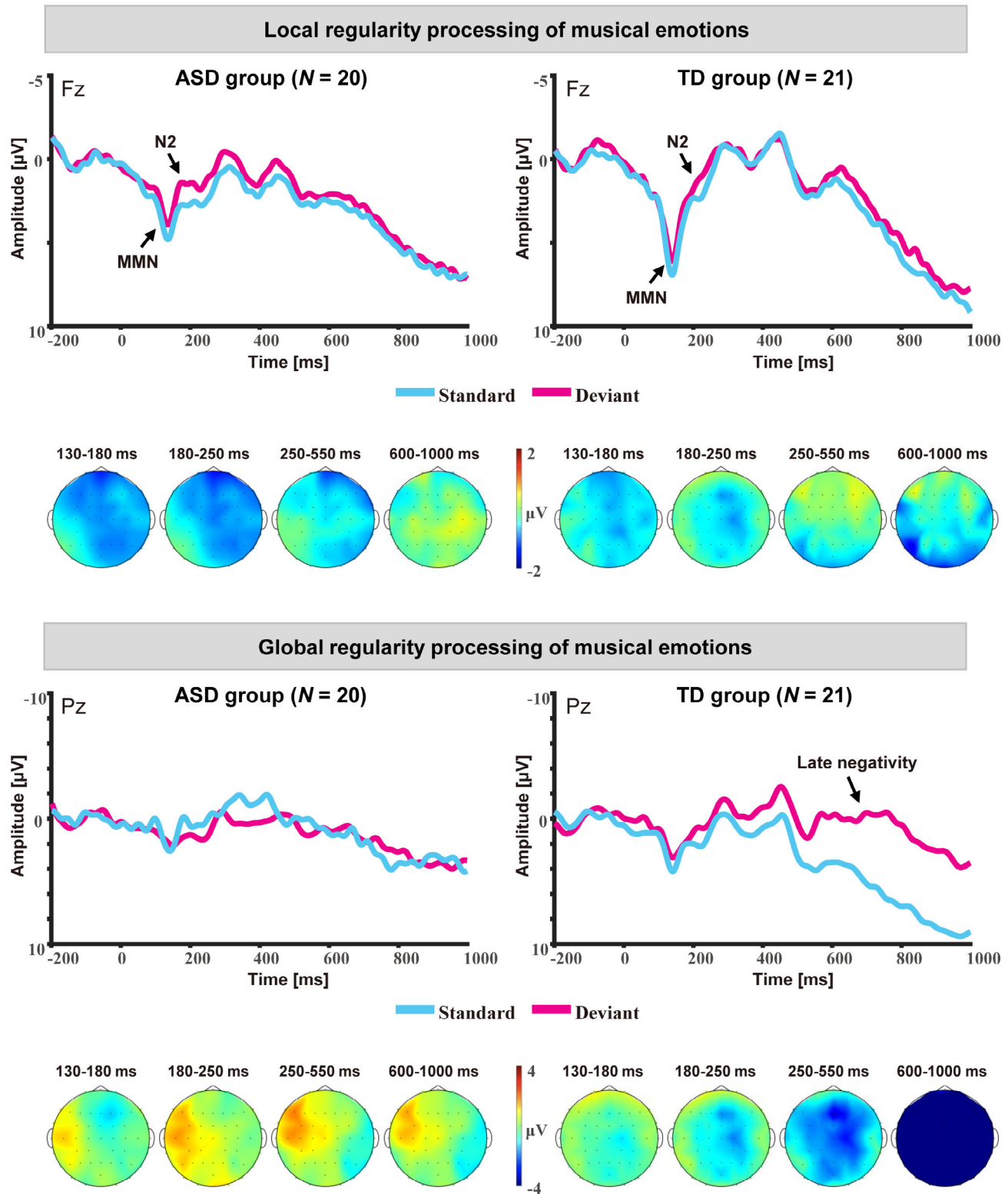
However, the findings on global processing showed that TD participants, but not ASD participants, exhibited a late negativity in response to global musical emotion regularity. The late negativity is an ERP component often observed in memory tasks, reflecting the top-down allocation of attention for the inspection of memory traces (Mecklinger et al., 2016). Previous studies have demonstrated that the late negativity could be elicited during evaluations of musical tonal (Loui et al., 2005) and rhythmic (Neuhaus & Knösche, 2006) regularities and the processing of phonological representations (Mah et al., 2016), although these studies did not include explicit memory tasks. In this case, the absence of the late negativity in ASD suggested that the autistic brain was unable to evaluate violations of global emotion regularity in musical sequences based on memory traces.

## GENERAL DISCUSSION

The present study is the first to investigate the neural responses to local and global emotion regularities extracted from facial and musical sequences in individuals with and without ASD. For facial emotion regularity processing, violations of local emotion regularity elicited an MMN in ASD participants but a P3b and an LPC in TD participants, whereas violations of global emotion regularity elicited a P3b and an LPC in TD participants only. Likewise, for musical emotion regularity

**TABLE 4** ERP results of the local regularity processing of musical emotions in Experiment 2

Variables	$F(1, 39)$	$p$	$\eta_p^2$	$BF$
MMN				
Group	3.15	0.084	0.08	1.24
Stimulus type	10.35	0.003	0.21	15.27
Group $\times$ stimulus type	1.02	0.319	0.03	0.25
N2				
Group	0.14	0.707	0.004	0.53
Stimulus type	10.62	0.002	0.21	14.35
Group $\times$ stimulus type	0.59	0.448	0.02	0.35
P3b				
Group	2.35	0.133	0.06	0.93
Stimulus type	2.81	0.102	0.07	0.76
Group $\times$ stimulus type	0.01	0.931	< 0.001	0.31
LPC/late negativity				
Group	0.004	0.950	< 0.001	0.46
Stimulus type	0.62	0.437	0.02	0.30
Group $\times$ stimulus type	1.02	0.320	0.03	0.43



**FIGURE 4** Grand mean waveforms elicited by local and global musical emotional regularities at representative electrode sites for ASD and TD participants. Bottom: Scalp distribution of the deviant-minus-standard difference waves in four-time windows for ASD and TD participants

processing, although violations of local emotion regularity elicited an MMN and an N2 in both groups, violations of global emotion regularity elicited a late negativity in TD participants only. Our results provide

insight into the neural mechanisms underlying emotion regularity processing in visual and auditory domains and offer novel evidence for the debate over whether global processing is impaired in ASD.

**TABLE 5** ERP results of the global regularity processing of musical emotions in Experiment 2

Variables	<i>F</i> (1, 39)	<i>p</i>	$\eta_p^2$	<i>BF</i>
MMN				
Group	1.51	0.227	0.04	0.72
Stimulus type	0.17	0.680	0.004	0.24
Group $\times$ stimulus type	<0.001	0.997	< 0.001	0.29
N2				
Group	0.24	0.627	0.01	0.32
Stimulus type	0.10	0.757	0.002	0.25
Group $\times$ stimulus type	1.86	0.180	0.05	0.64
P3b				
Group	0.27	0.607	0.01	0.35
Stimulus type	0.49	0.490	0.01	0.29
Group $\times$ stimulus type	3.58	0.066	0.08	1.28
LPC/late negativity				
Group	0.50	0.483	0.01	0.39
Stimulus type	8.01	0.007	0.17	5.25
Group $\times$ stimulus type	<b>5.27</b>	<b>0.027</b>	<b>0.12</b>	<b>29.19</b>
ASD: Dev = Std	0.14	0.711	0.004	
TD: Dev < Std	13.46	0.001	0.26	

Note: Significant interaction between group and stimulus type ( $p < 0.05$ ) are marked in bold. Dev = Deviant; Std = Standard.

## Implications for visual and auditory emotion regularity processing in ASD

One of the main findings of this study is that the autistic brain can respond to local but not global emotion regularity in sequential facial expressions. Consistent with previous behavioral studies suggesting preserved local processing of facial emotional information in ASD (Deruelle et al., 2008), our findings provide further electrophysiological evidence for this finding. Specifically, for local facial processing, despite different patterns of neural responses between the two groups, ASD participants showed an MMN in response to the deviant emotion of a fifth facial image that violated the local emotion regularity of a five-image sequence. Given that the MMN reflects an automated and nonconscious response to a mismatch during a pre-attentional phase (Bekinschtein et al., 2009; Wacongne et al., 2011), our finding indicates that the autistic brain can respond to violations of local emotion regularity in facial expressions at an early processing stage.

Regarding the global regularity processing of facial emotions, a P3b and an LPC (the continuation of the P3b component) in response to violations of global facial emotion regularity were observed in TD participants, but not in ASD participants. Similar results were also found in the blocks with local deviations, where TD participants, but not ASD participants, exhibited a P3b and an LPC in response to violations of local facial emotion

regularity. Indeed, the P3b and LPC reflect conscious detection of stimulus sequences in relatively later processing stages (Liu et al., 2012; Moore et al., 2019; Sanger et al., 2018; Schupp et al., 2000). For the blocks with global deviations, the five different facial images in the standard sequences were those in which the fifth image expressed a different emotion than the first four, whereas the five different facial images in the deviant sequences all expressed the same emotion. Therefore, the fifth image in the deviant sequences violated the global emotion regularity at the block level, rather than the emotion regularity in the deviant sequences per se (at a sequence level). In this scenario, the absence of the P3b and LPC in ASD indicates that the autistic brain cannot consciously respond to violations of the global facial emotion regularity extracted from the standard sequences.

Another main finding of this study is that ASD individuals' neural local processing bias observed in facial expressive sequences also generalized to the music (auditory) domain, as evidenced by their intact MMN and N2 in response to violations of local musical emotion regularity but the absence of a late negativity in response to violations of global emotion regularity in chord sequences. Specifically, similar to the MMN, the N2 is also considered as a mismatch-related component (Patel & Azzam, 2005), which is associated with attentive control (Folstein & Van Petten, 2008). In the present study, comparable to TD participants, ASD participants exhibited an MMN and an N2 to the local regularity of musical emotions, suggesting that they possess the ability to detect the mismatch of local musical emotional deviants. However, for the processing of global musical emotion regularity, a late negativity was observed in TD participants, but not in ASD participants. As discussed above, the late negativity reflects the allocation of attention for the inspection of memory traces (Mecklinger et al., 2016). Therefore, the absence of the late negativity in ASD indicates that their brain cannot consciously allocate attentional resources to evaluate the violations of global emotion regularity.

Across Experiments 1 and 2, ASD participants showed similar neural responses to emotion regularities in facial and musical sequences. However, there was a slight difference in the patterns of response to these two kinds of sequences, suggesting a distinction between visual and auditory emotion regularity processing. In particular, for violations of local emotion regularity, individuals with ASD only showed an MMN for facial expressive sequences, but exhibited both an MMN and an N2 for chord sequences. This might be due to the difference in processing between auditory and visual oddball tasks. Specifically, when comparing auditory and visual oddball tasks, the N2 is more easily evoked by the auditory than the visual modality in typically developing individuals (Halgren et al., 1998). Together, despite this slight difference, our findings indicate that the processing



of local and global emotion regularities in ASD is independent of the stimulus domain such as faces and music.

## Implications for the global deficit hypothesis in ASD

There is an ongoing debate on whether ASD is associated with a global processing deficit, and such a debate cannot be separated from the hypothesis of a local bias in ASD. Given that global integration requires extraction of regularity across various timescales, we investigated how the autistic brain responds to local and global emotion regularities in facial and musical sequences. At a local level, individuals with ASD exhibited preserved neural responses to local emotion regularity. Given that regularity extraction is based upon the perception of each facial expression, this finding extends EPF theory (Mottron et al., 2006; Mottron & Burack, 2001) to suggest that a local bias may facilitate local emotion regularity processing in ASD. On the other hand, consistent with previous findings of atypical neural responses to statistical relations (Jeste et al., 2015; Marin et al., 2020; Scott-Van Zeeland et al., 2010), our study showed that the autistic brain was unable to respond to global emotion regularity at a global level. These findings suggest that the autistic brain responses to emotion regularity are modulated by the timescale of sequential stimuli.

In the present study, the absence of brain responses to global regularities suggests that individuals with ASD are unable to detect violations of global emotion regularities at a conscious level, which may be attributed to attention deficits in ASD. Indeed, ASD is associated with deficits in focus/concentration (Keehn et al., 2013), attention span (Eaves et al., 1994), and shifting/orienting attention (Corbett et al., 2009; Keehn et al., 2010). Using local–global processing tasks, previous studies suggested that attentional shifting deficits could lead to difficulties for individuals with ASD to switch from attending to local details to global aspects rather than vice versa (Plaisted et al., 1999; Rinehart et al., 2001; Soriano et al., 2018). On the other hand, given that individuals with ASD take more time to process global information (Soriano et al., 2018; Van der Hallen et al., 2015; Wang et al., 2007), and local and global regularities in the present study differed in the timescale at which they were extracted, it is possible that attention deficits in ASD increase the risk of global processing difficulties by making it more difficult to learn emotional regularity from large-scale than small-scale time series. However, future studies are needed to test this hypothesis.

Regarding the debate on whether ASD is associated with a global processing deficit, some studies suggested that global processing is not impaired but less preferred in ASD, because whether the processing is impaired or enhanced depends on a default preference to processing local information, or instruction of allocation of

attention (Happé & Booth, 2008; Plaisted et al., 1999). Evidence shows that individuals with ASD exhibited better performance on the local than the global information when they were instructed to attend to both the local and global levels (Plaisted et al., 1999), or given a free-choice (Koldewyn et al., 2013); however, when they were instructed to attend to either local or global information, they showed comparable performance on attentive information, no matter what level it was (Plaisted et al., 1999; Van der Hallen et al., 2017). Therefore, the global deficit has been interpreted as a disinclination, rather than a disability in ASD (Koldewyn et al., 2013).

However, our findings on how individuals with ASD process local versus global emotion regularities do not provide evidence for the disinclination view. In particular, participants in our study were instructed to count the number of global deviant sequences that violated the regularity of the majority of the sequences. That is, participants were instructed to attend to the global regularity. Despite this requirement, ASD participants did not show typical neural responses to violations of global emotion regularities in either facial or musical sequences. This finding is inconsistent with previous studies (Happé & Booth, 2008; Plaisted et al., 1999) that reported intact global performance by individuals with ASD who were instructed to attend to the global information. The different stimuli used across studies may account for this discrepancy. In particular, previous studies used either a global shape (e.g., a global triangle made of small squares) (Hayward et al., 2012), or a large letter (e.g., a large H made up of small Ss) (Plaisted et al., 1999). Unlike the static graphs used by these studies, our study used dynamic sequences as stimuli. Such a design allowed us to explore local versus global processing separately by excluding the interference of one over the other, which might have led to different results than previous studies. However, future studies are needed to investigate this hypothesis by comparing ASD participants' performance on both types of tasks.

It is worth noting that the processing of local regularity in the present study also reflects global processing, although such processing occurs at a sequence level. For the local emotion regularity task, neither local attention nor perception was explicitly required. Instead, our participants were instructed to attend to the global information. However, results showed that the autistic brain was able to respond to violations of the local emotion regularities in both facial and musical sequences at a preattentive level. Therefore, intact early neural response to local emotion regularity may be due to the local bias in ASD. That is, if individuals with ASD indeed had a bias towards local elements/details, then this processing style would facilitate the extraction of regularity from these discrete elements in short sequences. Together, given that the local and global regularities differed in the timescale at which they were extracted in the present study, our findings indicate that the processing of emotion

regularity depends upon the timescale of sequences in individuals with ASD.

## Limitations and future directions

One limitation of the present study is that our sample size is relatively small, although power analysis had suggested that this sample size was large enough to reveal an effect. Moreover, although most of our participants were adolescents, we did include participants with a wider age range in order to increase our overall sample size. To examine the potential impact of participant age on our results, we reanalyzed the data by including age as a covariate. The results showed the same patterns as in the ANOVAs (see Supporting information for details), suggesting that our findings were not significantly influenced by participants' age ranges. However, future studies should use a larger sample size and focus on specific age ranges (e.g., children or adults) to further confirm the neural alternation in processing global emotion regularity in ASD.

Another caveat is that we did not include neutral emotion as a control condition in the present study. This is because the goal of the present study was to investigate neural responses to local and global emotion *regularities*, rather than the processing of *emotions* per se, in facial and musical sequences. Therefore, we did not examine the processing of discrete emotions using neutral emotion as a perceptual control condition. Indeed, although neutral facial emotions are relatively common, it is almost impossible to find a single chord that is completely neutral. In order to investigate the processing of local and global emotion regularities across modalities, we selected pleasant and unpleasant faces/chords as stimuli. However, it would be interesting for future studies to investigate group differences in processing negative/positive versus neutral emotions at local and global levels across visual and other auditory (e.g., speech) domains.

## Conclusion

The present study reveals for the first time that the autistic brain can process local but not global emotion regularity in facial and musical sequences. Given that there is a great deal of heterogeneity in results regarding the deficit of ASD, our findings may contribute to a better understanding of the characteristics of ASD. First, our study showed that the autistic brain exhibited similar patterns of neural anomaly in processing global emotion regularities in faces and music. This finding suggests a domain-general global processing deficit in ASD. Second, considering that emotion processing in visual and auditory domains is equally important to social communication, our findings indicated that the processing of emotion regularities at both local and global levels in

ASD may be independent of the stimulus domain such as faces and music. This suggests that the global processing deficit in ASD may be domain-general, contributing to social-communication difficulties among individuals with ASD. Finally, regarding the debate over whether ASD is associated with a global processing deficit, our findings demonstrated that the processing of global emotion regularity in ASD is modulated by the timescale of the facial and musical sequences. Together, these findings may contribute to a better understanding of the neural mechanisms underlying regularity processing, as well as the processing of local versus global information in ASD.

## ACKNOWLEDGMENTS

This work was supported by a Philosophy and Social Science Projects of Shanghai (Grant No. 2021BWY004) to J. X., a European Research Council Starting Grant to F. L. and C. J. (CAASD, No. 678733), and the National Natural Science Foundation of China (Grant No. 31470972 to C. J. and F. L., and Grant No. 31500876 to L. Z. and J. J.).

## CONFLICT OF INTEREST

The authors declare no conflict of interest.

## ORCID

Linshu Zhou  <https://orcid.org/0000-0003-3134-8635>

Fang Liu  <https://orcid.org/0000-0002-7776-0222>

Jun Jiang  <https://orcid.org/0000-0002-0063-3225>

Cunmei Jiang  <https://orcid.org/0000-0002-0264-5924>

## REFERENCES

- Akechi, H., Senju, A., Kikuchi, Y., Tojo, Y., Osanai, H., & Hasegawa, T. (2010). The effect of gaze direction on the processing of facial expressions in children with autism spectrum disorder: An ERP study. *Neuropsychologia*, 48(10), 2841–2851. <https://doi.org/10.1016/j.neuropsychologia.2010.05.026>
- American Psychiatric Association. (2013). *Diagnostic and statistical manual of mental disorders* (5th ed.). American Psychiatric Association. <https://doi.org/10.1176/appi.books.9780890425596>
- Apicella, F., Sicca, F., Federico, R. R., Campatelli, G., & Muratori, F. (2013). Fusiform gyrus responses to neutral and emotional faces in children with autism spectrum disorders: A high density ERP study. *Behavioural Brain Research*, 251, 155–162. <https://doi.org/10.1016/j.bbr.2012.10.040>
- Baisa, A., Mevorach, C., & Shalev, L. (2021). Hierarchical processing in ASD is driven by exaggerated salience effects, not local bias. *Journal of Autism and Developmental Disorders*, 51(2), 666–676. <https://doi.org/10.1007/s10803-020-04578-1>
- Batty, M., Meaux, E., Wittemeyer, K., Rogé, B., & Taylor, M. J. (2011). Early processing of emotional faces in children with autism: An event-related potential study. *Journal of Experimental Child Psychology*, 109(4), 430–444. <https://doi.org/10.1016/j.jecp.2011.02.001>
- Bekinschtein, T. A., Dehaene, S., Rohaut, B., Tadel, F., Cohen, L., & Naccache, L. (2009). Neural signature of the conscious processing of auditory regularities. *Proceedings of the National Academy of Sciences of the United States of America*, 106(5), 1672–1677. <https://doi.org/10.1073/pnas.0809667106>
- Bhatara, A., Quintin, E. M., Levy, B., Bellugi, U., Fombonne, E., & Levitin, D. J. (2010). Perception of emotion in musical

- performance in adolescents with autism spectrum disorders. *Autism Research*, 3(5), 214–225. <https://doi.org/10.1002/aur.147>
- Bonnel, A., McAdams, S., Smith, B., Berthiaume, C., Bertone, A., Ciocca, V., Burack, J. A., & Mottron, L. (2010). Enhanced pure-tone pitch discrimination among persons with autism but not Asperger syndrome. *Neuropsychologia*, 48(9), 2465–2475. <https://doi.org/10.1016/j.neuropsychologia.2010.04.020>
- Bonnel, A., Mottron, L., Peretz, I., Trudel, M., Gallun, E., & Bonnel, A.-M. (2003). Enhanced pitch sensitivity in individuals with autism: A signal detection analysis. *Journal of Cognitive Neuroscience*, 15(2), 226–235. <https://doi.org/10.1162/089892903321208169>
- Booth, R., & Happé, F. (2018). Evidence of reduced global processing in autism spectrum disorder. *Journal of Autism and Developmental Disorders*, 48(4), 1397–1408. <https://doi.org/10.1007/s10803-016-2724-6>
- Bouvet, L., Simard-Meilleur, A.-A., Paignon, A., Mottron, L., & Donnadieu, S. (2014). Auditory local bias and reduced global interference in autism. *Cognition*, 131(3), 367–372. <https://doi.org/10.1016/j.cognition.2014.02.006>
- Brewer, R., Bird, G., Gray, K. L. H., & Cook, R. (2019). Face perception in autism spectrum disorder: Modulation of holistic processing by facial emotion. *Cognition*, 193, 104016. <https://doi.org/10.1016/j.cognition.2019.104016>
- Brieber, S., Herpertz-Dahlmann, B., Fink, G. R., Kamp-Becker, I., Remschmidt, H., & Konrad, K. (2010). Coherent motion processing in autism spectrum disorder (ASD): An fMRI study. *Neuropsychologia*, 48(6), 1644–1651. <https://doi.org/10.1016/j.neuropsychologia.2010.02.007>
- Brown, L. S. (2017). The influence of music on facial emotion recognition in children with autism spectrum disorder and neurotypical children. *Journal of Music Therapy*, 54(1), 55–79. <https://doi.org/10.1093/jmt/thw017>
- Brydges, C. R., & Bielak, A. A. (2020). A Bayesian analysis of evidence in support of the null hypothesis in gerontological psychology (or lack thereof). *The Journals of Gerontology: Series B*, 75(1), 58–66. <https://doi.org/10.1093/geronb/gbz033>
- Bublitzky, F., Flaisch, T., Stockburger, J., Schmälzle, R., & Schupp, H. T. (2010). The interaction of anticipatory anxiety and emotional picture processing: An event-related brain potential study. *Psychophysiology*, 47(4), 687–696. <https://doi.org/10.1111/j.1469-8986.2010.00966.x>
- Campanella, S., Delle-Vigne, D., Kornreich, C., & Verbanck, P. (2012). Greater sensitivity of the P300 component to bimodal stimulation in an event-related potentials oddball task. *Clinical Neurophysiology*, 123(5), 937–946. <https://doi.org/10.1016/j.clinph.2011.10.041>
- Campanella, S., Gaspard, C., Debatisse, D., Bruyer, R., Crommelinck, M., & Guerit, J.-M. (2002). Discrimination of emotional facial expressions in a visual oddball task: An ERP study. *Biological Psychology*, 59(3), 171–186. [https://doi.org/10.1016/S0301-0511\(02\)00005-4](https://doi.org/10.1016/S0301-0511(02)00005-4)
- Caria, A., Venuti, P., & de Falco, S. (2011). Functional and dysfunctional brain circuits underlying emotional processing of music in autism spectrum disorders. *Cerebral Cortex*, 21(12), 2838–2849. <https://doi.org/10.1093/cercor/bhr084>
- Chen, A., Luo, Y., Wang, Q., Yuan, J., Yao, D., & Li, H. (2007). Electrophysiological correlates of category induction: PSW amplitude as an index of identifying shared attributes. *Biological Psychology*, 76(3), 230–238. <https://doi.org/10.1016/j.biopsycho.2007.08.007>
- Chowdhury, R., Sharda, M., Foster, N. E. V., Germain, E., Tryfon, A., Doyle-Thomas, K., Anagnostou, E., & Hyde, K. L. (2017). Auditory pitch perception in autism spectrum disorder is associated with nonverbal abilities. *Perception*, 46(11), 1298–1320. <https://doi.org/10.1177/0301006617718715>
- Corbett, B. A., Constantine, L. J., Hendren, R., Rocke, D., & Ozonoff, S. (2009). Examining executive functioning in children with autism spectrum disorder, attention deficit hyperactivity disorder and typical development. *Psychiatry Research*, 166(2–3), 210–222. <https://doi.org/10.1016/j.psychres.2008.02.005>
- Critchley, H. D., Daly, E. M., Bullmore, E. T., Williams, S. C., Van Amelsvoort, T., Robertson, D. M., Rowe, A., Phillips, M., McAlonan, G., Howlin, P., & Murphy, D. G. (2000). The functional neuroanatomy of social behaviour: Changes in cerebral blood flow when people with autistic disorder process facial expressions. *Brain*, 123(11), 2203–2212. <https://doi.org/10.1093/brain/123.11.2203>
- Cusack, J. P., Williams, J. H. G., & Neri, P. (2015). Action perception is intact in autism spectrum disorder. *The Journal of Neuroscience*, 35(5), 1849–1857. <https://doi.org/10.1523/JNEUROSCI.4133-13.2015>
- Davidson, D., Hilvert, E., Misiunaite, I., Kerby, K., & Giordano, M. (2019). Recognition of facial emotions on human and canine faces in children with and without autism spectrum disorders. *Motivation and Emotion*, 43(1), 191–202. <https://doi.org/10.1007/s11031-018-9736-9>
- Dawson, G., Webb, S. J., Carver, L., Panagiotides, H., & McPartland, J. (2004). Young children with autism show atypical brain responses to fearful versus neutral facial expressions of emotion. *Developmental Science*, 7(3), 340–359. <https://doi.org/10.1111/j.1467-7687.2004.00352.x>
- de Jong, M. C., van Engeland, H., & Kemner, C. (2008). Attentional effects of gaze shifts are influenced by emotion and spatial frequency, but not in autism. *Journal of the American Academy of Child & Adolescent Psychiatry*, 47(4), 443–454. <https://doi.org/10.1097/CHI.0b013e31816429a6>
- Deeley, Q., Daly, E. M., Surguladze, S., Page, L., Toal, F., Robertson, D., Curran, S., Giampietro, V., Seal, M., Brammer, M. J., Andrew, C., Murphy, K., Phillips, M. L., & Murphy, D. G. (2007). An event related functional magnetic resonance imaging study of facial emotion processing in Asperger syndrome. *Biological Psychiatry*, 62(3), 207–217. <https://doi.org/10.1016/j.biopsych.2006.09.037>
- Deruelle, C., Rondan, C., Salle-Collemiche, X., Bastard-Rosset, D., & Da Fonséca, D. (2008). Attention to low-and high-spatial frequencies in categorizing facial identities, emotions and gender in children with autism. *Brain and Cognition*, 66(2), 115–123. <https://doi.org/10.1016/j.bandc.2007.06.001>
- D'Souza, D., Booth, R., Connolly, M., Happé, F., & Karmiloff-Smith, A. (2016). Rethinking the concepts of 'local or global processors': Evidence from Williams syndrome, down syndrome, and autism spectrum disorders. *Developmental Science*, 19(3), 452–468. <https://doi.org/10.1111/desc.12312>
- Eaves, L. C., Ho, H. H., & Eaves, D. M. (1994). Subtypes of autism by cluster analysis. *Journal of Autism and Developmental Disorders*, 24(1), 3–22. <https://doi.org/10.1007/BF02172209>
- Erhan, H., Borod, J. C., Tenke, C. E., & Bruder, G. E. (1998). Identification of emotion in a dichotic listening task: Event-related brain potential and behavioral findings. *Brain and Cognition*, 37(2), 286–307. <https://doi.org/10.1006/brcg.1998.0984>
- Erickson, L. C., & Thiessen, E. D. (2015). Statistical learning of language: Theory, validity, and predictions of a statistical learning account of language acquisition. *Developmental Review*, 37, 66–108. <https://doi.org/10.1016/j.dr.2015.05.002>
- Everaert, T., Spruyt, A., Rossi, V., Pourtois, G., & De Houwer, J. (2014). Feature-specific attention allocation overrules the orienting response to emotional stimuli. *Social Cognitive and Affective Neuroscience*, 9(9), 1351–1359. <https://doi.org/10.1093/scan/nst121>
- Evers, K., Steyaert, J., Noens, I., & Wagemans, J. (2015). Reduced recognition of dynamic facial emotional expressions and emotion-specific response bias in children with an autism spectrum disorder. *Journal of Autism and Developmental Disorders*, 45(6), 1774–1784. <https://doi.org/10.1007/s10803-014-2337-x>
- Faja, S., Dawson, G., Aylward, E., Wijsman, E. M., & Webb, S. J. (2016). Early event-related potentials to emotional faces differ for



- adults with autism spectrum disorder and by serotonin transporter genotype. *Clinical Neurophysiology*, 127(6), 2436–2447. <https://doi.org/10.1016/j.clinph.2016.02.022>
- Faul, F., Erdfelder, E., Lang, A.-G., & Buchner, A. (2007). G\*power 3: A flexible statistical power analysis program for the social, behavioral, and biomedical sciences. *Behavior Research Methods*, 39(2), 175–191. <https://doi.org/10.3758/BF03193146>
- Folstein, J. R., & Van Petten, C. (2008). Influence of cognitive control and mismatch on the N2 component of the ERP: A review. *Psychophysiology*, 45(1), 152–170. <https://doi.org/10.1111/j.1469-8986.2007.00602.x>
- Folstein, J. R., & Van Petten, C. (2011). After the P3: Late executive processes in stimulus categorization. *Psychophysiology*, 48(6), 825–841. <https://doi.org/10.1111/j.1469-8986.2010.01146.x>
- Foster, N. E. V., Ouimet, T., Tryfon, A., Doyle-Thomas, K., Anagnostou, E., & Hyde, K. L. (2016). Effects of age and attention on auditory global–local processing in children with autism spectrum disorder. *Journal of Autism and Developmental Disorders*, 46(4), 1415–1428. <https://doi.org/10.1007/s10803-015-2684-2>
- Foxton, J. M., Stewart, M. E., Barnard, L., Rodgers, J., Young, A. H., O'Brien, G., & Griffiths, T. D. (2003). Absence of auditory 'global interference' in autism. *Brain*, 126(12), 2703–2709. <https://doi.org/10.1093/brain/awg274>
- Frith, U. (1989). *Autism: Explaining the enigma*. Basil Blackwell.
- Frith, U., & Happé, F. (1994). Autism: Beyond "theory of mind". *Cognition*, 50(1–3), 115–132. [https://doi.org/10.1016/0010-0277\(94\)90024-8](https://doi.org/10.1016/0010-0277(94)90024-8)
- Garrido, M. I., Kilner, J. M., Stephan, K. E., & Friston, K. J. (2009). The mismatch negativity: A review of underlying mechanisms. *Clinical Neurophysiology*, 120(3), 453–463. <https://doi.org/10.1016/j.clinph.2008.11.029>
- Gauthier, I., Klaiman, C., & Schultz, R. T. (2009). Face composite effects reveal abnormal face processing in autism spectrum disorders. *Vision Research*, 49(4), 470–478. <https://doi.org/10.1016/j.visres.2008.12.007>
- Gebauer, L., Skewes, J., Westphal, G., Heaton, P., & Vuust, P. (2014). Intact brain processing of musical emotions in autism spectrum disorder, but more cognitive load and arousal in happy vs. sad music. *Frontiers in Neuroscience*, 8, 192. <https://doi.org/10.3389/fnins.2014.00192>
- Germain, E., Foster, N., Sharda, M., Chowdhury, R., Tryfon, A., Doyle-Thomas, K., Anagnostou, E., & Hyde, K. L. (2019). Pitch direction ability predicts melodic perception in autism. *Child Neuropsychology*, 25(4), 445–465. <https://doi.org/10.1080/09297049.2018.1488954>
- Gong, X., Huang, Y., Wang, Y., & Luo, Y. (2011). Revision of the Chinese facial affective picture system. *Chinese Mental Health Journal*, 25(1), 40–46. <https://doi.org/10.3969/j.issn.1000-6729.2011.01.011>
- Goris, J., Braem, S., Nijhof, A. D., Rigoni, D., Deschrijver, E., Van de Cruys, S., Wiersema, J. R., & Brass, M. (2018). Sensory prediction errors are less modulated by global context in autism spectrum disorder. *Biological Psychiatry: Cognitive Neuroscience and Neuroimaging*, 3(8), 667–674. <https://doi.org/10.1016/j.bpsc.2018.02.003>
- Greimel, E., Schulte-Rüther, M., Kircher, T., Kamp-Becker, I., Remschmidt, H., Fink, G. R., Herpertz-Dahlmann, B., & Konrad, K. (2010). Neural mechanisms of empathy in adolescents with autism spectrum disorder and their fathers. *NeuroImage*, 49(1), 1055–1065. <https://doi.org/10.1016/j.neuroimage.2009.07.057>
- Griffiths, S., Jarrold, C., Penton-Voak, I. S., Woods, A. T., Skinner, A. L., & Munafò, M. R. (2019). Impaired recognition of basic emotions from facial expressions in young people with autism spectrum disorder: Assessing the importance of expression intensity. *Journal of Autism and Developmental Disorders*, 49(7), 2768–2778. <https://doi.org/10.1007/s10803-017-3091-7>
- Guy, J., Motttron, L., Berthiaume, C., & Bertone, A. (2019). A developmental perspective of global and local visual perception in autism Spectrum disorder. *Journal of Autism and Developmental Disorders*, 49(7), 2706–2720. <https://doi.org/10.1007/s10803-016-2834-1>
- Hadjikhani, N., Joseph, R. M., Snyder, J., & Tager-Flusberg, H. (2007). Abnormal activation of the social brain during face perception in autism. *Human Brain Mapping*, 28(5), 441–449. <https://doi.org/10.1002/hbm.20283>
- Haebig, E., Saffran, J. R., & Ellis Weismer, S. (2017). Statistical word learning in children with autism spectrum disorder and specific language impairment. *Journal of Child Psychology and Psychiatry*, 58(11), 1251–1263. <https://doi.org/10.1111/jcpp.12734>
- Halgren, E., Marinkovic, K., & Chauvel, P. (1998). Generators of the late cognitive potentials in auditory and visual oddball tasks. *Electroencephalography and Clinical Neurophysiology*, 106(2), 156–164. [https://doi.org/10.1016/s0013-4694\(97\)00119-3](https://doi.org/10.1016/s0013-4694(97)00119-3)
- Happé, F., & Booth, R. (2008). The power of the positive: Revisiting weak coherence in autism spectrum disorders. *Quarterly Journal of Experimental Psychology*, 61(1), 50–63. <https://doi.org/10.1080/17470210701508731>
- Happé, F., & Frith, U. (2006). The weak coherence account: Detail-focused cognitive style in autism spectrum disorders. *Journal of Autism and Developmental Disorders*, 36(1), 5–25. <https://doi.org/10.1007/s10803-005-0039-0>
- Harms, M. B., Martin, A., & Wallace, G. L. (2010). Facial emotion recognition in autism spectrum disorders: A review of behavioral and neuroimaging studies. *Neuropsychology Review*, 20(3), 290–322. <https://doi.org/10.1007/s11065-010-9138-6>
- Hayward, D. A., Shore, D. I., Ristic, J., Kovshoff, H., Iarocci, G., Motttron, L., & Burack, J. A. (2012). Flexible visual processing in young adults with autism: The effects of implicit learning on a global–local task. *Journal of Autism and Developmental Disorders*, 42(11), 2383–2392. <https://doi.org/10.1007/s10803-012-1485-0>
- Heaton, P., Hermelin, B., & Pring, L. (1998). Autism and pitch processing: A precursor for savant musical ability. *Music Perception*, 15(3), 291–305. <https://doi.org/10.2307/40285769>
- Heaton, P., Pring, L., & Hermelin, B. (1999). A pseudo-savant: A case of exceptional musical splinter skills. *Neurocase*, 5(6), 503–509. <https://doi.org/10.1080/13554799908402745>
- Holroyd, C. (2004). A note on the oddball N200 and the feedback ERN. In M. Ullsperger & M. Falkenstein, *Errors, conflicts, and the brain: Current opinions on performance monitoring* (pp. 211–218). Max Planck Institute for Human Cognitive and Brain Sciences.
- Jack, R. E., & Schyns, P. G. (2015). The human face as a dynamic tool for social communication. *Current Biology*, 25(14), R621–R634. <https://doi.org/10.1016/j.cub.2015.05.052>
- Järvinen, A., Ng, R., Crivelli, D., Neumann, D., Arnold, A. J., Woo-VonHoogenstyn, N., Lai, P., Trauner, D., & Bellugi, U. (2016). Social functioning and autonomic nervous system sensitivity across vocal and musical emotion in Williams syndrome and autism spectrum disorder. *Developmental Psychobiology*, 58(1), 17–26. <https://doi.org/10.1002/dev.21335>
- Jeffreys, H. (1961). *Theory of probability* (3rd ed.). Oxford University Press.
- Jeste, S. S., Kirkham, N., Senturk, D., Hasenstab, K., Sugar, C., Kupelian, C., Baker, E., Sanders, A. J., Shimizu, C., Norona, A., Paparella, T., Freeman, S. F., & Johnson, S. P. (2015). Electrophysiological evidence of heterogeneity in visual statistical learning in young children with ASD. *Developmental Science*, 18(1), 90–105. <https://doi.org/10.1111/desc.12188>
- Jiang, J., Liu, F., Wan, X., & Jiang, C. (2015). Perception of melodic contour and intonation in autism spectrum disorder: Evidence from mandarin speakers. *Journal of Autism and Developmental Disorders*, 45(7), 2067–2075. <https://doi.org/10.1007/s10803-015-2370-4>
- Jobs, E. N., Falck-Ytter, T., & Bölte, S. (2018). Local and global visual processing in 3-year-olds with and without autism. *Journal of*



- Autism and Developmental Disorders*, 48(6), 2249–2257. <https://doi.org/10.1007/s10803-018-3470-8>
- Katagiri, J. (2009). The effect of background music and song texts on the emotional understanding of children with autism. *Journal of Music Therapy*, 46(1), 15–31. <https://doi.org/10.1093/jmt/46.1.15>
- Keehn, B., Lincoln, A. J., Muller, R.-A., & Townsend, J. (2010). Attentional networks in children and adolescents with autism spectrum disorder. *Journal of Child Psychology and Psychiatry*, 51(11), 1251–1259. <https://doi.org/10.1111/j.1469-7610.2010.02257.x>
- Keehn, B., Müller, R.-A., & Townsend, J. (2013). Atypical attentional networks and the emergence of autism. *Neuroscience and Biobehavioral Reviews*, 37(2), 164–183. <https://doi.org/10.1016/j.neubiorev.2012.11.014>
- Klapwijk, E. T., Aghajani, M., Colins, O. F., Marijnissen, G. M., Popma, A., van Lang, N. D., van der Wee, N. J., & Vermeiren, R. R. (2016). Different brain responses during empathy in autism spectrum disorders versus conduct disorder and callous-unemotional traits. *Journal of Child Psychology and Psychiatry*, 57(6), 737–747. <https://doi.org/10.1111/jcpp.12498>
- Koldewyn, K., Jiang, Y. V., Weigelt, S., & Kanwisher, N. (2013). Global/local processing in autism: Not a disability, but a disinclination. *Journal of Autism and Developmental Disorders*, 43(10), 2329–2340. <https://doi.org/10.1007/s10803-013-1777-z>
- Koldewyn, K., Whitney, D., & Rivera, S. M. (2010). The psychophysics of visual motion and global form processing in autism. *Brain*, 133(2), 599–610. <https://doi.org/10.1093/brain/awp272>
- Kopec, J., Hillier, A., & Frye, A. (2014). The valency of music has different effects on the emotional responses of those with autism spectrum disorders and a comparison group. *Music Perception*, 31(5), 436–443. <https://doi.org/10.1525/mp.2014.31.5.436>
- Krakowski, C.-S., Poirel, N., Vidal, J., Roëll, M., Pineau, A., Borst, G., & Houdé, O. (2016). The forest, the trees, and the leaves: Differences of processing across development. *Developmental Psychology*, 52(8), 1262–1272. <https://doi.org/10.1037/dev0000138>
- Lee, M. D., & Wagenmakers, E.-J. (2014). *Bayesian cognitive modeling: A practical course*. Cambridge University Press. <https://doi.org/10.1017/CBO9781139087759>
- Liu, Y., Huang, H., McGinnis-Deweese, M., Keil, A., & Ding, M. (2012). Neural substrate of the late positive potential in emotional processing. *The Journal of Neuroscience*, 32(42), 14563–14572. <https://doi.org/10.1523/jneurosci.3109-12.2012>
- Lord, C., Rutter, M., DiLavore, P. C., Risi, S., Gotham, K., & Bishop, S. (2012). *Autism diagnostic observation schedule (2nd ed.)*. Western Psychological Corporation.
- Loth, E., Garrido, L., Ahmad, J., Watson, E., Duff, A., & Duchaine, B. (2018). Facial expression recognition as a candidate marker for autism spectrum disorder: How frequent and severe are deficits? *Molecular Autism*, 9:7. <https://doi.org/10.1186/s13229-018-0187-7>
- Loui, P., Grent, T., Torpey, D., & Woldorff, M. (2005). Effects of attention on the neural processing of harmonic syntax in Western music. *Cognitive Brain Research*, 25(3), 678–687. <https://doi.org/10.1016/j.cogbrainres.2005.08.019>
- Love, J., Selker, R., Marsman, M., Jamil, T., Dropmann, D., Verhagen, J., Ly, A., Gronau, Q. F., Šmíra, M., Epskamp, S., Matzke, D., Wild, A., Knight, P., Rouder, J. N., Morey, R. D., & Wagenmakers, E.-J. (2019). JASP: Graphical statistical software for common statistical designs. *Journal of Statistical Software*, 88(2), 1–17. <https://doi.org/10.18637/jss.v088.i02>
- Lozier, L. M., Vanmeter, J. W., & Marsh, A. A. (2014). Impairments in facial affect recognition associated with autism spectrum disorders: A meta-analysis. *Development and Psychopathology*, 26(4), 933–945. <https://doi.org/10.1017/S0954579414000479>
- Luck, S. J., & Hillyard, S. A. (1994). Electrophysiological correlates of feature analysis during visual search. *Psychophysiology*, 31(3), 291–308. <https://doi.org/10.1111/j.1469-8986.1994.tb02218.x>
- Mah, J., Goad, H., & Steinhauer, K. (2016). Using event-related brain potentials to assess perceptibility: The case of French speakers and English [h]. *Frontiers in Psychology*, 7, 1469. <https://doi.org/10.3389/fpsyg.2016.01469>
- Manning, C., Charman, T., & Pellicano, E. (2015). Coherent motion processing in autism: Is dot lifetime an important parameter? *Journal of Autism and Developmental Disorders*, 45(7), 2252–2258. <https://doi.org/10.1007/s10803-015-2365-1>
- Marin, A., Hutman, T., Ponting, C., McDonald, N. M., Carver, L., Baker, E., Daniel, M., Dickinson, A., Dapretto, M., Johnson, S. P., & Jeste, S. S. (2020). Electrophysiological signatures of visual statistical learning in 3-month-old infants at familial and low risk for autism spectrum disorder. *Developmental Psychobiology*, 62(6), 858–870. <https://doi.org/10.1002/dev.21971>
- Martínez, A., Tobe, R., Dias, E. C., Ardekani, B. A., Veenstra-VanderWeele, J., Patel, G., Breland, M., Lieval, A., Silipo, G., & Javitt, D. C. (2019). Differential patterns of visual sensory alteration underlying face emotion recognition impairment and motion perception deficits in schizophrenia and autism spectrum disorder. *Biological Psychiatry*, 86(7), 557–567. <https://doi.org/10.1016/j.biopsych.2019.05.016>
- Mayo, J., & Eigsti, I.-M. (2012). A comparison of statistical learning in school-aged children with high functioning autism and typically developing peers. *Journal of Autism and Developmental Disorders*, 42(11), 2476–2485. <https://doi.org/10.1007/s10803-012-1493-0>
- Mecklinger, A., Rosburg, T., & Johansson, M. (2016). Reconstructing the past: The late posterior negativity (LPN) in episodic memory studies. *Neuroscience and Biobehavioral Reviews*, 68, 621–638. <https://doi.org/10.1016/j.neubiorev.2016.06.024>
- Moore, M., Shafer, A. T., Bakhtiari, R., Dolcos, F., & Singhal, A. (2019). Integration of spatio-temporal dynamics in emotion-cognition interactions: A simultaneous fMRI-ERP investigation using the emotional oddball task. *NeuroImage*, 202, 116078. <https://doi.org/10.1016/j.neuroimage.2019.116078>
- Mottron, L., & Burack, J. A. (2001). Enhanced perceptual functioning in the development of autism. In J. A. Burack, T. Charman, N. Yirmiya, & P. R. Zelazo (Eds.), *The development of autism: Perspectives from theory and research* (pp. 131–148). Lawrence Erlbaum Associates.
- Mottron, L., Dawson, M., Soulières, I., Hubert, B., & Burack, J. (2006). Enhanced perceptual functioning in autism: An update, and eight principles of autistic perception. *Journal of Autism and Developmental Disorders*, 36(1), 27–43. <https://doi.org/10.1007/s10803-005-0040-7>
- Näätänen, R., Tervaniemi, M., Sussman, E., Paavilainen, P., & Winkler, I. (2001). 'Primitive intelligence' in the auditory cortex. *Trends in Neurosciences*, 24(5), 283–288. [https://doi.org/10.1016/S0166-2236\(00\)01790-2](https://doi.org/10.1016/S0166-2236(00)01790-2)
- Neufeld, J., Hagström, A., Van't Westende, A., Lundin, K., Cauvet, É., Willfors, C., Isaksson, J., Lichtenstein, P., & Bölte, S. (2020). Global and local visual processing in autism—A co-twin-control study. *Journal of Child Psychology and Psychiatry*, 61(4), 470–479. <https://doi.org/10.1111/jcpp.13120>
- Neuhaus, C., & Knösche, T. R. (2006). Processing of rhythmic and melodic gestalts—An ERP study. *Music Perception*, 24(2), 209–222. <https://doi.org/10.1525/mp.2006.24.2.209>
- Patel, S. H., & Azzam, P. N. (2005). Characterization of N200 and P300: Selected studies of the event-related potential. *International Journal of Medical Sciences*, 2(4), 147–154. <https://doi.org/10.7150/ijms.2.147>
- Philip, R. C., Whalley, H. C., Stanfield, A. C., Sprengelmeyer, R., Santos, I. M., Young, A. W., Atkinson, A. P., Calder, A. J., Johnstone, E. C., Lawrie, S. M., & Hall, J. (2010). Deficits in facial, body movement and vocal emotional processing in autism spectrum disorders. *Psychological Medicine*, 40(11), 1919–1929. <https://doi.org/10.1017/S0033291709992364>
- Pierce, K., Müller, R.-A., Ambrose, J., Allen, G., & Courchesne, E. (2001). Face processing occurs outside the fusiform 'face area' in

- autism: Evidence from functional MRI. *Brain*, 124(10), 2059–2073. <https://doi.org/10.1093/brain/124.10.2059>
- Pijnacker, J., Geurts, B., Van Lambalgen, M., Buitelaar, J., & Hagoort, P. (2010). Exceptions and anomalies: An ERP study on context sensitivity in autism. *Neuropsychologia*, 48(10), 2940–2951. <https://doi.org/10.1016/j.neuropsychologia.2010.06.003>
- Plaisted, K. C., Swettenham, J., & Rees, L. (1999). Children with autism show local precedence in a divided attention task and global precedence in a selective attention task. *Journal of Child Psychology and Psychiatry*, 40(5), 733–742. <https://doi.org/10.1111/1469-7610.00489>
- Polich, J. (2007). Updating P300: An integrative theory of P3a and P3b. *Clinical Neurophysiology*, 118(10), 2128–2148. <https://doi.org/10.1016/j.clinph.2007.04.019>
- Putkinen, V., Tervaniemi, M., Saarikivi, K., Ojala, P., & Huotilainen, M. (2014). Enhanced development of auditory change detection in musically trained school-aged children: A longitudinal event-related potential study. *Developmental Science*, 17(2), 282–297. <https://doi.org/10.1111/desc.12109>
- Quintin, E.-M., Bhatara, A., Poissant, H., Fombonne, E., & Levitin, D. J. (2011). Emotion perception in music in high-functioning adolescents with autism spectrum disorders. *Journal of Autism and Developmental Disorders*, 41(9), 1240–1255. <https://doi.org/10.1007/s10803-010-1146-0>
- Raven, J. (2000). The Raven's progressive matrices: Change and stability over culture and time. *Cognitive Psychology*, 41(1), 1–48. <https://doi.org/10.1006/cogp.1999.0735>
- Rezvani, Z., Katanfroush, A., & Pouretmad, H. (2020). Global precedence changes by environment: A systematic review and meta-analysis on effect of perceptual field variables on global-local visual processing. *Attention, Perception & Psychophysics*, 82(5), 2348–2359. <https://doi.org/10.3758/s13414-020-01997-1>
- Rinehart, N. J., Bradshaw, J. L., Moss, S. A., Brereton, A. V., & Tonge, B. J. (2001). A deficit in shifting attention present in high-functioning autism but not Asperger's disorder. *Autism*, 5(1), 67–80. <https://doi.org/10.1177/1362361301005001007>
- Roser, M. E., Aslin, R. N., McKenzie, R., Zahra, D., & Fiser, J. (2015). Enhanced visual statistical learning in adults with autism. *Neuropsychology*, 29(2), 163–172. <https://doi.org/10.1037/neu0000137>
- Sanders, L. D., & Poeppel, D. (2007). Local and global auditory processing: Behavioral and ERP evidence. *Neuropsychologia*, 45(6), 1172–1186. <https://doi.org/10.1016/j.neuropsychologia.2006.10.010>
- Sanger, K. L., Thierry, G., & Dorjee, D. (2018). Effects of school-based mindfulness training on emotion processing and well-being in adolescents: Evidence from event-related potentials. *Developmental Science*, 21(5), e12646. <https://doi.org/10.1111/desc.12646>
- Schirmer, A., & Escoffier, N. (2010). Emotional MMN: Anxiety and heart rate correlate with the ERP signature for auditory change detection. *Clinical Neurophysiology*, 121(1), 53–59. <https://doi.org/10.1016/j.clinph.2009.09.029>
- Schupp, H. T., Cuthbert, B. N., Bradley, M. M., Cacioppo, J. T., Ito, T., & Lang, P. J. (2000). Affective picture processing: The late positive potential is modulated by motivational relevance. *Psychophysiology*, 37(2), 257–261. <https://doi.org/10.1111/1469-8986.3720257>
- Scott-Van Zeeland, A. A., McNealy, K., Wang, A. T., Sigman, M., Bookheimer, S. Y., & Dapretto, M. (2010). No neural evidence of statistical learning during exposure to artificial languages in children with autism spectrum disorders. *Biological Psychiatry*, 68(4), 345–351. <https://doi.org/10.1016/j.biopsych.2010.01.011>
- Sergent, C., Baillet, S., & Dehaene, S. (2005). Timing of the brain events underlying access to consciousness during the attentional blink. *Nature Neuroscience*, 8(10), 1391–1400. <https://doi.org/10.1038/nn1549>
- Shariff, A. F., & Tracy, J. L. (2011). What are emotion expressions for? *Current Directions in Psychological Science*, 20(6), 395–399. <https://doi.org/10.1177/0963721411424739>
- Soriano, M. F., Ibáñez-Molina, A. J., Paredes, N., & Macizo, P. (2018). Autism: Hard to switch from details to the whole. *Journal of Abnormal Child Psychology*, 46(6), 1359–1371. <https://doi.org/10.1007/s10802-017-0384-4>
- Stanutz, S., Wapnick, J., & Burack, J. A. (2014). Pitch discrimination and melodic memory in children with autism spectrum disorders. *Autism*, 18(2), 137–147. <https://doi.org/10.1177/1362361312462905>
- Steinbeis, N., & Koelsch, S. (2011). Affective priming effects of musical sounds on the processing of word meaning. *Journal of Cognitive Neuroscience*, 23(3), 604–621. <https://doi.org/10.1162/jocn.2009.21383>
- Stevenson, R. A., Segers, M., Ncube, B. L., Black, K. R., Bebkco, J. M., Ferber, S., & Barense, M. D. (2018). The cascading influence of multisensory processing on speech perception in autism. *Autism*, 22(5), 609–624. <https://doi.org/10.1177/1362361317704413>
- Sucksmith, E., Allison, C., Baron-Cohen, S., Chakrabarti, B., & Hoekstra, R. A. (2013). Empathy and emotion recognition in people with autism, first-degree relatives, and controls. *Neuropsychologia*, 51(1), 98–105. <https://doi.org/10.1016/j.neuropsychologia.2012.11.013>
- Teixeira-Santos, A. C., Pinal, D., Pereira, D. R., Leite, J., Carvalho, S., & Sampaio, A. (2020). Probing the relationship between late endogenous ERP components with fluid intelligence in healthy older adults. *Scientific Reports*, 10:11167. <https://doi.org/10.1038/s41598-020-67924-4>
- Teunisse, J.-P., & de Gelder, B. (2003). Face processing in adolescents with autistic disorder: The inversion and composite effects. *Brain and Cognition*, 52(3), 285–294. [https://doi.org/10.1016/S0278-2626\(03\)00042-3](https://doi.org/10.1016/S0278-2626(03)00042-3)
- Tye, C., Battaglia, M., Bertolotti, E., Ashwood, K. L., Azadi, B., Asherson, P., Bolton, P., & McLoughlin, G. (2014). Altered neurophysiological responses to emotional faces discriminate children with ASD, ADHD and ASD+ ADHD. *Biological Psychology*, 103, 125–134. <https://doi.org/10.1016/j.biopsycho.2014.08.013>
- Uljarevic, M., & Hamilton, A. (2013). Recognition of emotions in autism: A formal meta-analysis. *Journal of Autism and Developmental Disorders*, 43(7), 1517–1526. <https://doi.org/10.1007/s10803-012-1695-5>
- van Boxtel, J. J. A., Dapretto, M., & Lu, H. (2016). Intact recognition, but attenuated adaptation, for biological motion in youth with autism spectrum disorder. *Autism Research*, 9(10), 1103–1113. <https://doi.org/10.1002/aur.1595>
- Van der Hallen, R., Evers, K., Brewaeys, K., Van den Noortgate, W., & Wagemans, J. (2015). Global processing takes time: A meta-analysis on local-global visual processing in ASD. *Psychological Bulletin*, 141(3), 549–573. <https://doi.org/10.1037/bul0000004>
- Van der Hallen, R., Vanmarcke, S., Noens, I., & Wagemans, J. (2017). Hierarchical letters in ASD: High stimulus variability under different attentional modes. *Journal of Autism and Developmental Disorders*, 47(6), 1854–1865. <https://doi.org/10.1007/s10803-017-3108-2>
- van Dinteren, R., Arns, M., Jongsma, M. L., & Kessels, R. P. (2014). P300 development across the lifespan: A systematic review and meta-analysis. *PLOS ONE*, 9(2), e87347. <https://doi.org/10.1371/journal.pone.0087347>
- van Doorn, J., van den Bergh, D., Böhm, U., Dablander, F., Derks, K., Draws, T., Etz, A., Evans, N. J., Gronau, Q. F., Haaf, J. M., Hinne, M., Kucharský, Š., Ly, A., Marsman, M., Matzke, D., Gupta, A., Sarafoglou, A., Stefan, A., Voelkel, J. G., & Wagenmakers, E.-J. (2021). The JASP guidelines for conducting and reporting a Bayesian analysis. *Psychonomic Bulletin & Review*, 28(3), 813–826. <https://doi.org/10.3758/s13423-020-01798-5>
- Ventura, P., Carmo, J. C., Souza, C., Martins, F., Leite, I., Pinho, S., Barahona-Correa, B., & Filipe, C. N. (2018). Holistic processing of faces is intact in adults with autism spectrum disorder. *Visual*

- Cognition*, 26(1), 13–24. <https://doi.org/10.1080/13506285.2017.1370051>
- Virtala, P., Huottilainen, M., Putkinen, V., Makkonen, T., & Tervaniemi, M. (2012). Musical training facilitates the neural discrimination of major versus minor chords in 13-year-old children. *Psychophysiology*, 49(8), 1125–1132. <https://doi.org/10.1111/j.1469-8986.2012.01386.x>
- Vlamings, P. H. J. M., Jonkman, L. M., van Daalen, E., van der Gaag, R. J., & Kemner, C. (2010). Basic abnormalities in visual processing affect face processing at an early age in autism spectrum disorder. *Biological Psychiatry*, 68(12), 1107–1113. <https://doi.org/10.1016/j.biopsych.2010.06.024>
- Wacongne, C., Labyt, E., van Wassenhove, V., Bekinschtein, T., Naccache, L., & Dehaene, S. (2011). Evidence for a hierarchy of predictions and prediction errors in human cortex. *Proceedings of the National Academy of Sciences of the United States of America*, 108(51), 20754–20759. <https://doi.org/10.1073/pnas.1117807108>
- Wagener, G. L., Berning, M., Costa, A. P., Steffgen, G., & Melzer, A. (2021). Effects of emotional music on facial emotion recognition in children with autism Spectrum disorder (ASD). *Journal of Autism and Developmental Disorders*, 51(9), 3256–3265. <https://doi.org/10.1007/s10803-020-04781-0>
- Wagenmakers, E. J., Marsman, M., Jamil, T., Ly, A., Verhagen, J., Love, J., Selker, R., Gronau, Q. F., Šmíra, M., Epskamp, S., Matzke, D., Rouder, J. N., & Morey, R. D. (2018). Bayesian inference for psychology. Part I: Theoretical advantages and practical ramifications. *Psychonomic Bulletin & Review*, 25(1), 35–57. <https://doi.org/10.3758/s13423-017-1343-3>
- Wang, L., Mottron, L., Peng, D., Berthiaume, C., & Dawson, M. (2007). Local bias and local-to-global interference without global deficit: A robust finding in autism under various conditions of attention, exposure time, and visual angle. *Cognitive Neuropsychology*, 24(5), 550–574. <https://doi.org/10.1080/13546800701417096>
- Yeung, M. K., Han, Y. M., Sze, S. L., & Chan, A. S. (2014). Altered right frontal cortical connectivity during facial emotion recognition in children with autism spectrum disorders. *Research in Autism Spectrum Disorders*, 8(11), 1567–1577. <https://doi.org/10.1016/j.rasd.2014.08.013>
- Zhou, L., Liu, F., Jiang, J., & Jiang, C. (2019). Impaired emotional processing of chords in congenital amusia: Electrophysiological and behavioral evidence. *Brain and Cognition*, 135, 103577. <https://doi.org/10.1016/j.bandc.2019.06.001>

## SUPPORTING INFORMATION

Additional supporting information may be found in the online version of the article at the publisher's website.

**How to cite this article:** Xu, J., Zhou, L., Liu, F., Xue, C., Jiang, J., & Jiang, C. (2021). The autistic brain can process local but not global emotion regularities in facial and musical sequences. *Autism Research*, 1–19. <https://doi.org/10.1002/aur.2635>